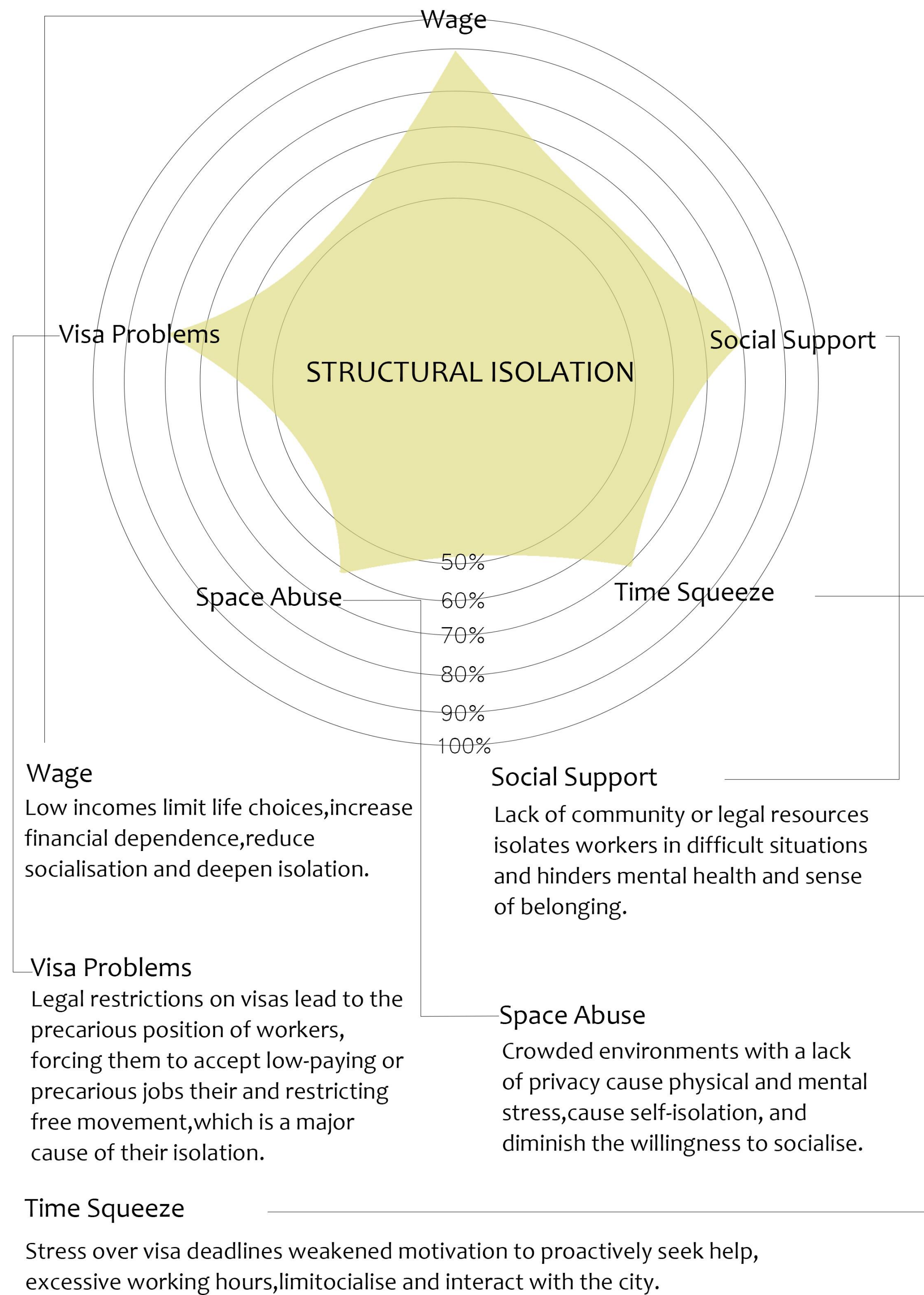
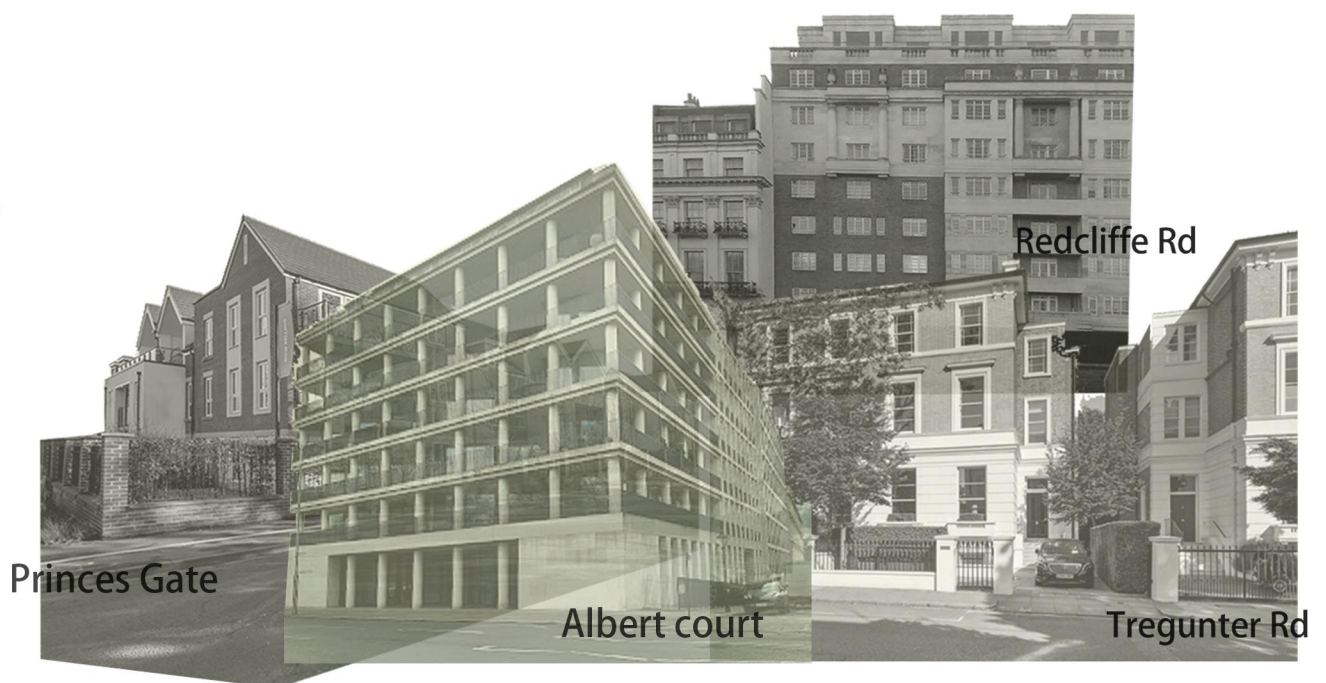
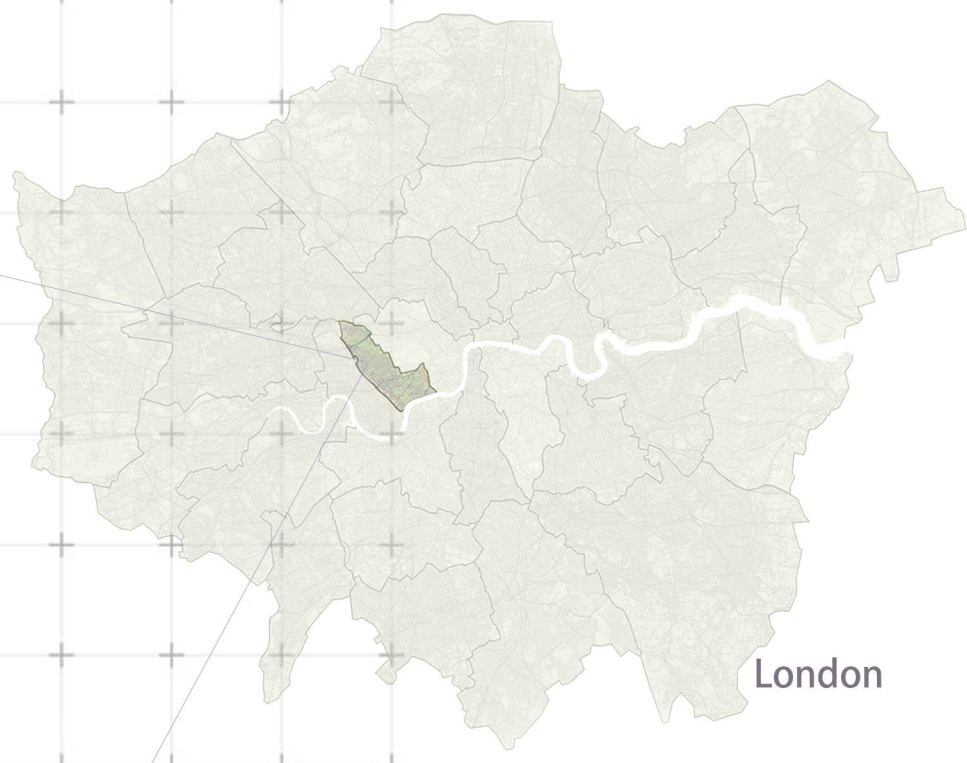
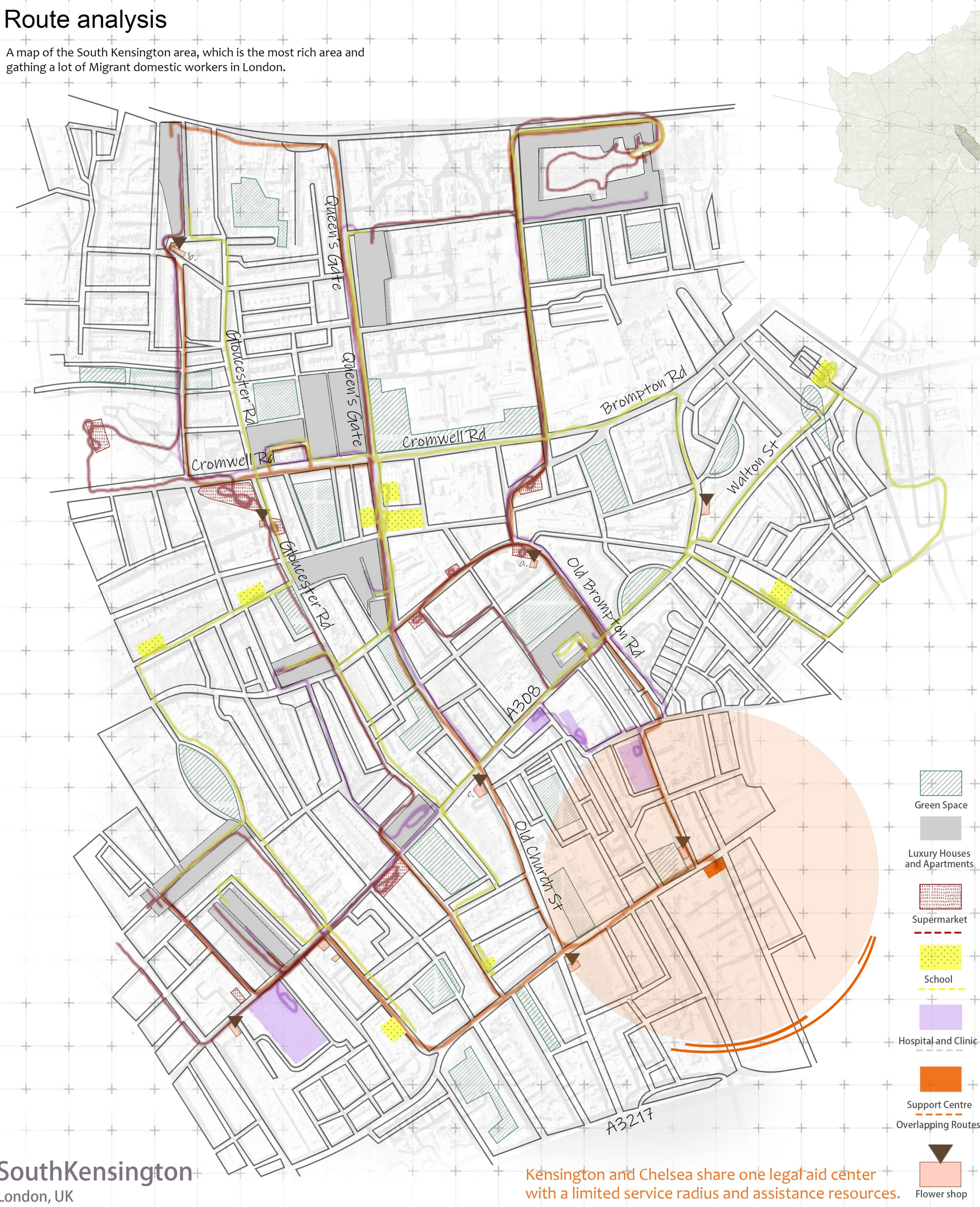


KEY DRIVERS OF ISOLATION



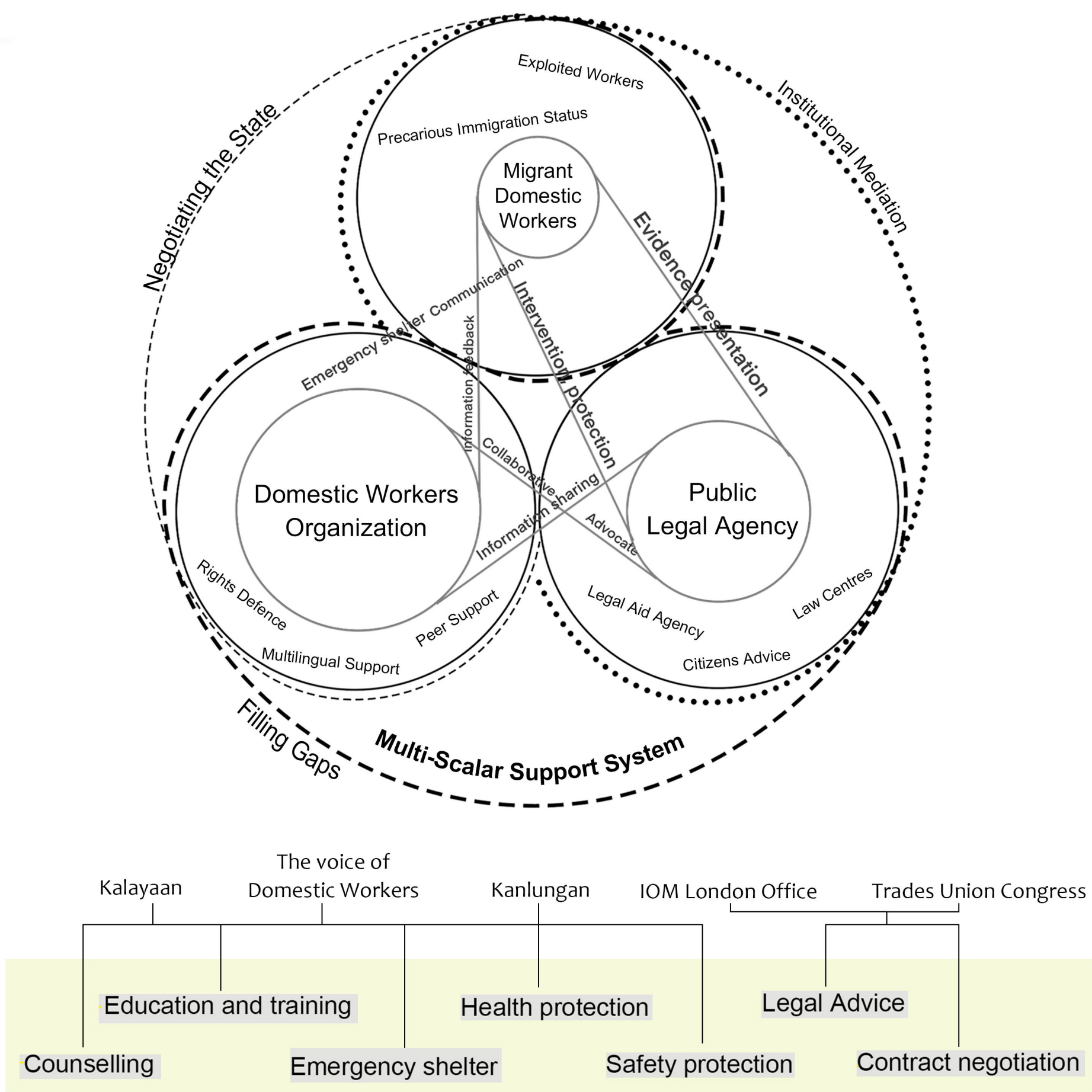
Route analysis

A map of the South Kensington area, which is the most rich area and gathing a lot of Migrant domestic workers in London.



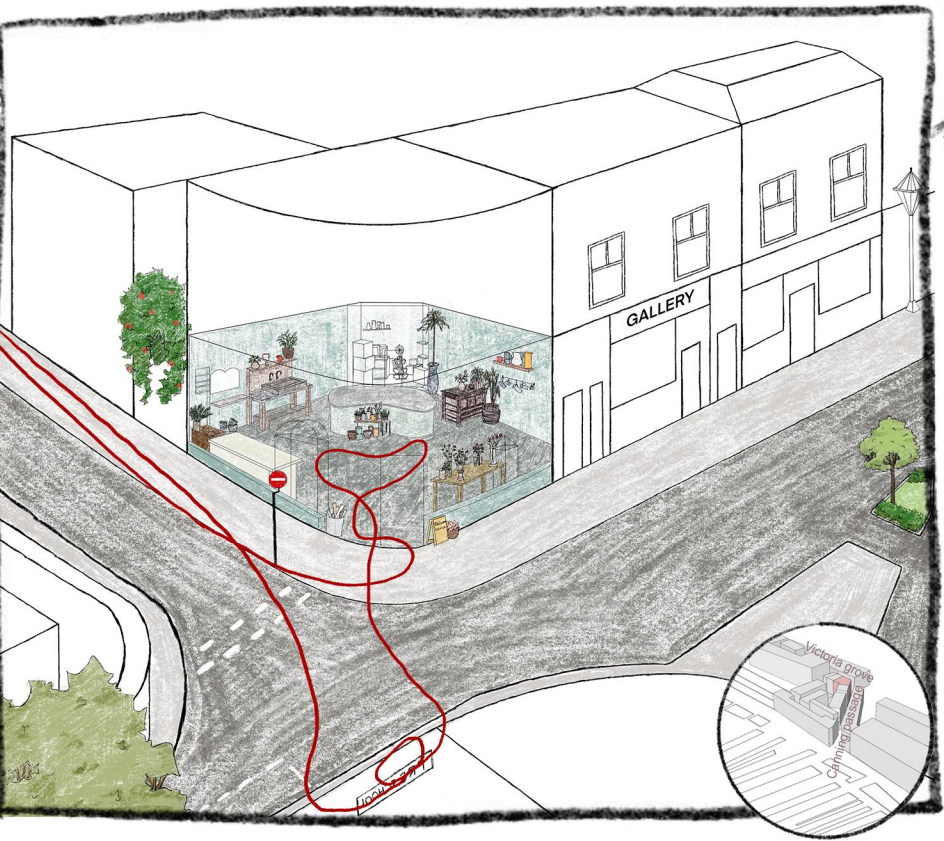
South Kensington is home to many cultural celebrities and international tycoons, with a high concentration of high net worth families, large homes and high maintenance needs, with many tenants employing full-time domestic workers. Figures show that this is one of the areas with the highest concentration of domestic workers in London. What is ostensibly a life of sophistication and elegance relies on a great deal of invisible labour behind the scenes. The privacy of this space and differences in social status also make it difficult for domestic workers to access support.

Support Network



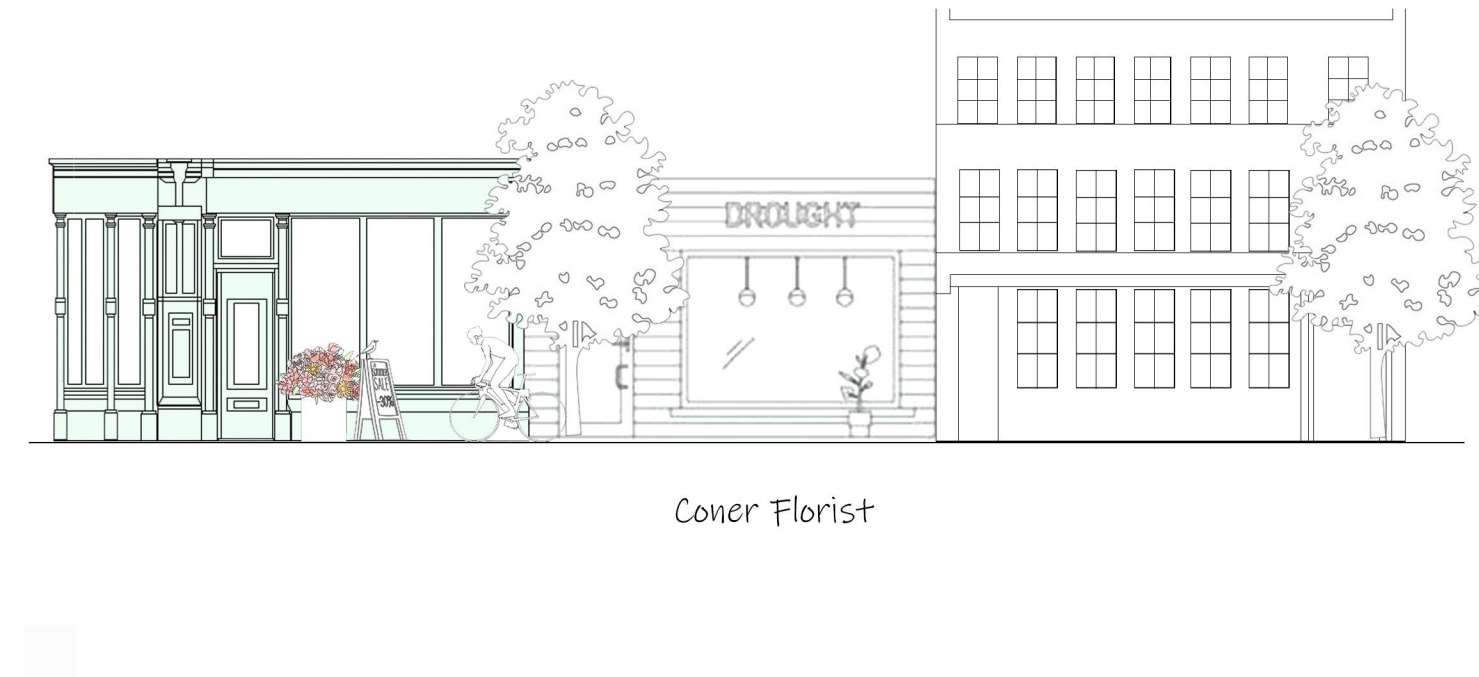
The voice of Domestic Workers			
Kalayaan		Kanlungan	IOM London Office
			Trades Union Congress
Education and training		Health protection	
Counselling		Legal Advice	
Emergency shelter		Safety protection	
		Contract negotiation	

The map shows a section of South Kensington, London. Key streets include Cromwell Rd, Gloucester Rd, and A32. A red line highlights a specific route starting from the bottom left, passing through Harrington Gardens, and ending near Gloucester Road Station. The map also shows various residential areas and landmarks like the Gloucester Road Station.

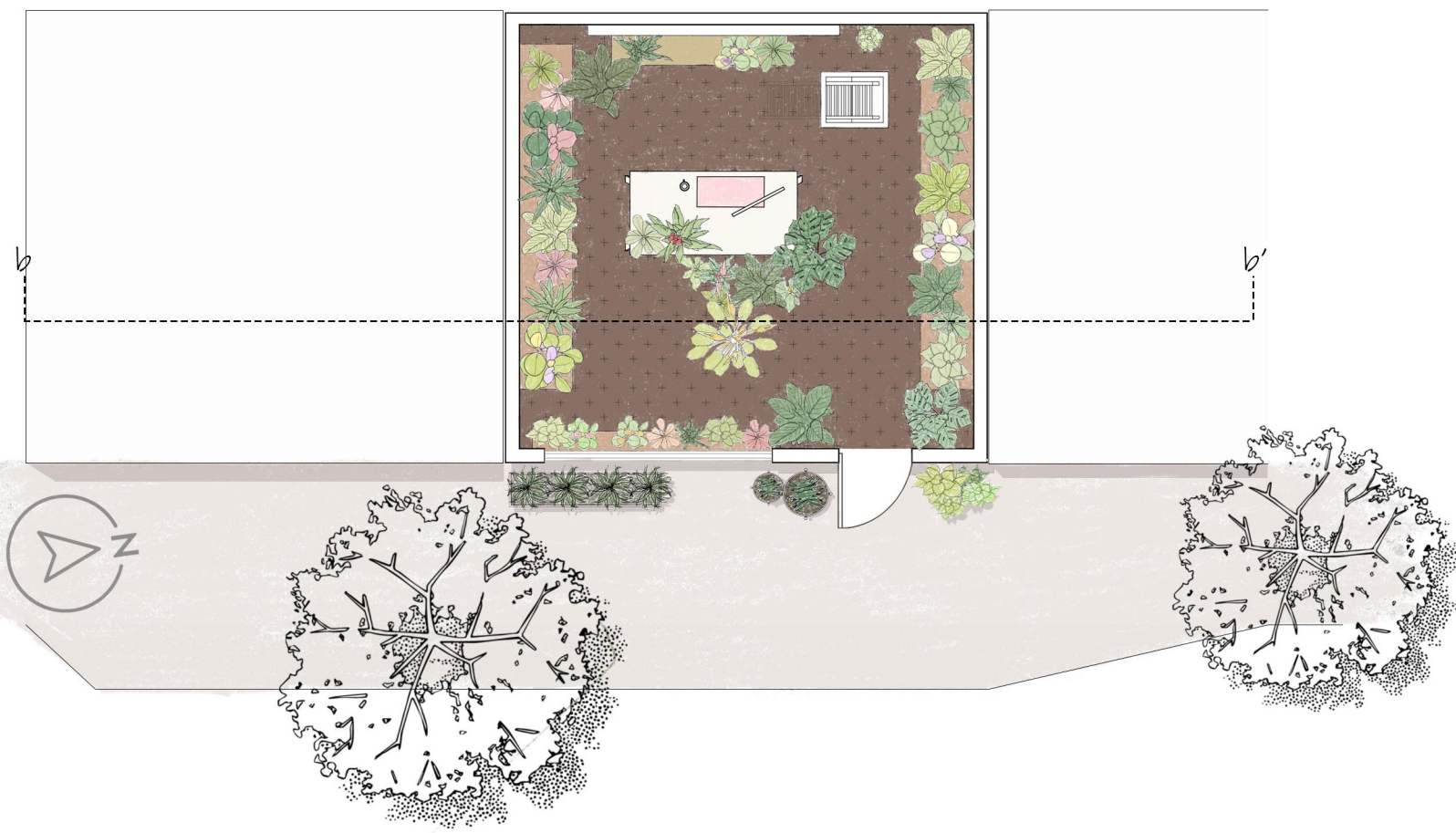


- a. **Cleaning:**
Performed throughout the day as fragmented tasks across multiple households.
- b. **Cooking (7:00–8:00, 12:00–13:00, 17:00–18:00):**
Meal preparation scheduled around employers' routines, often split into three shifts.
- c. **Elderly Care (Daytime):**
Involves feeding, supervising, and accompanying elderly employers during their rest

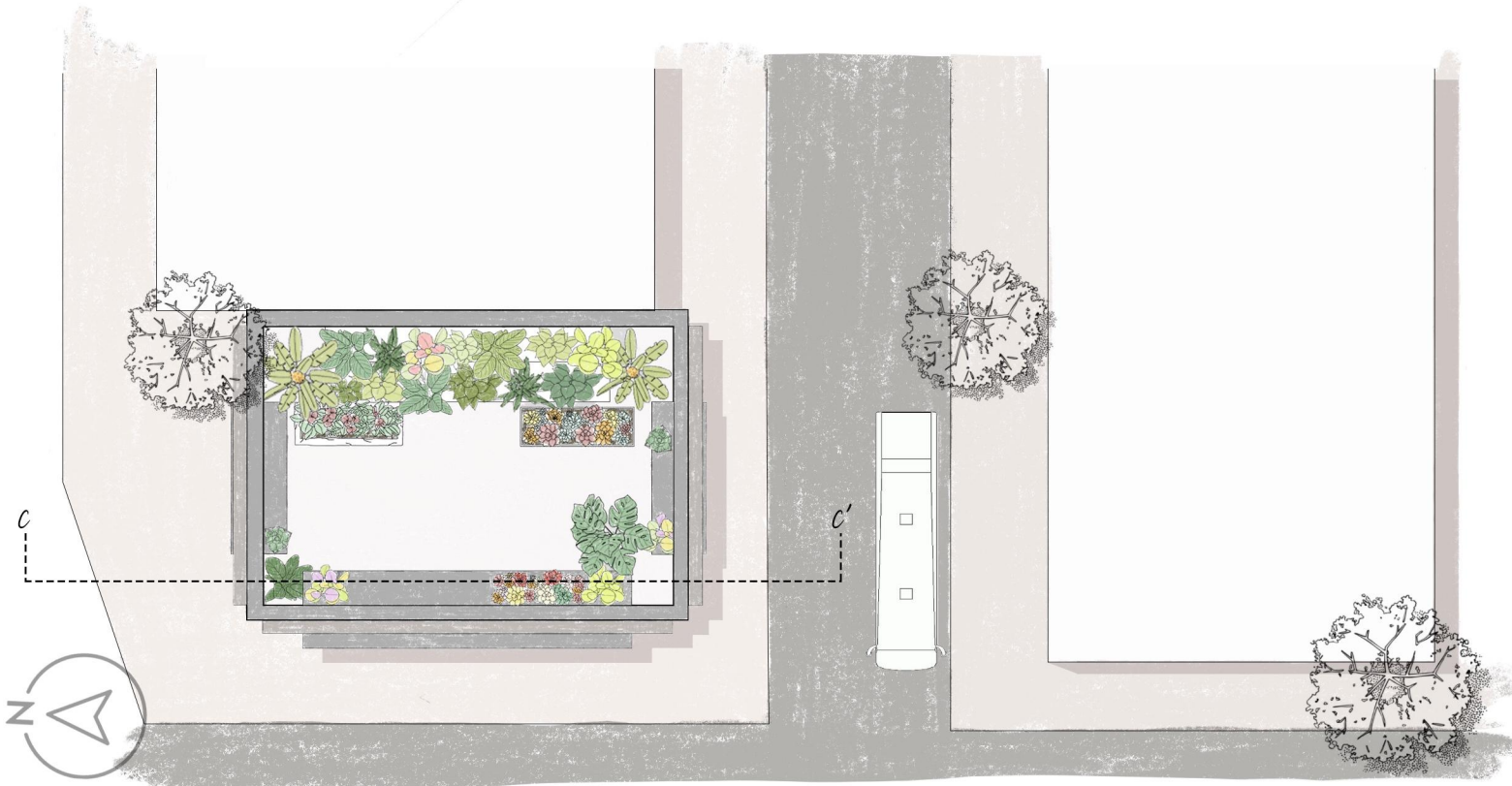
- d. **Childcare (Afternoon):**
Picking up children from schools and accompanying them at home or in public areas.
- e. **Errands and Shopping (Flexible hours):**
Includes grocery runs or household errands, usually within walking distance of the home.
- f. **Break Time (13:00–14:00):**
Short rest periods, often spent in public spaces such as parks, bus stops, or churches.
- g. **Night Shifts and Sleep (21:00–6:00):**
Rest is often interrupted or delayed due to on-call duties or inadequate accommodation.



Corner Florist



In-line Florist



Street-standing Florist

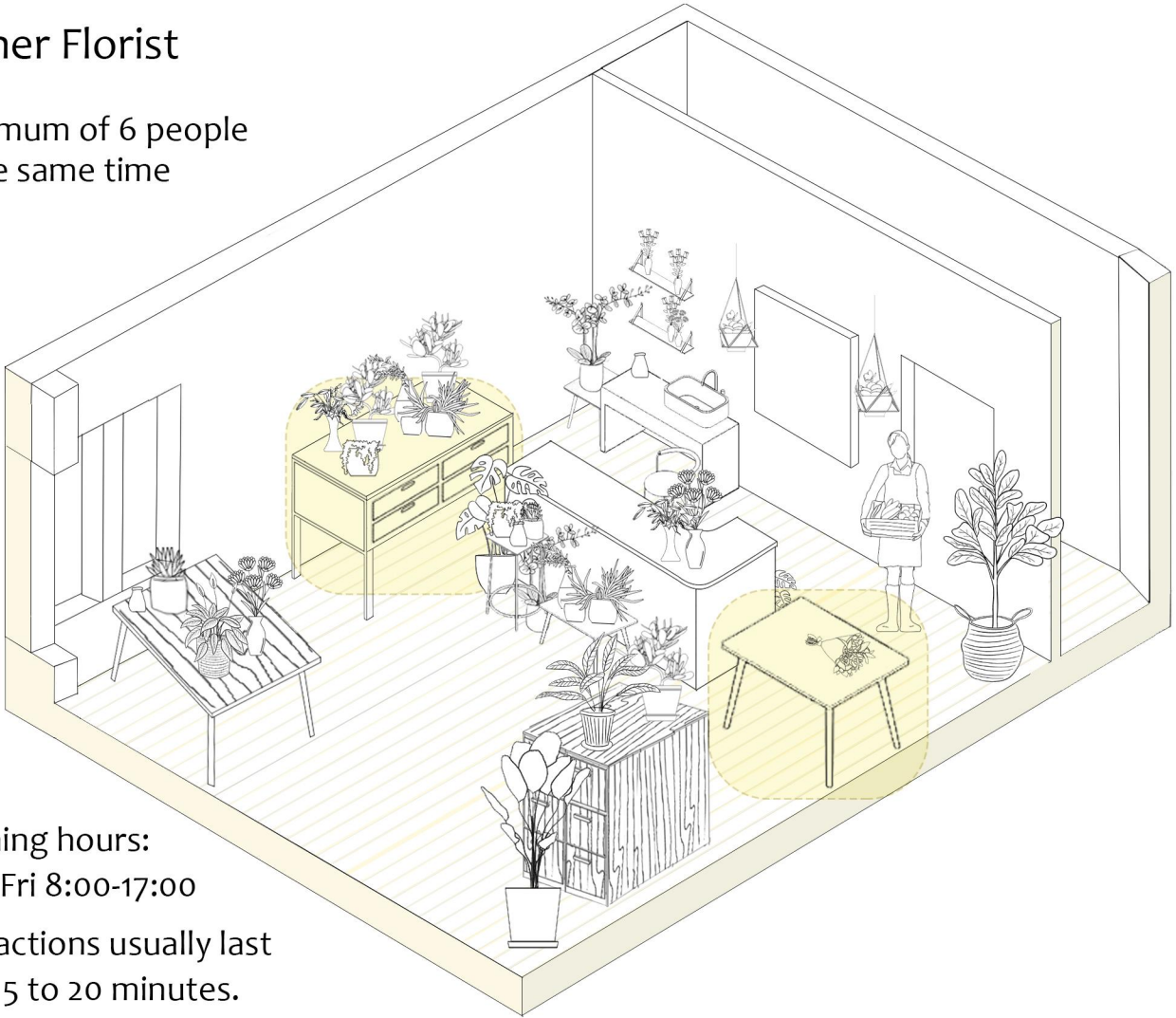
INTERVENTIONS

intervenable component

Corner Florist

Maximum of 6 people
at the same time

Opening hours:
Mon-Fri 8:00-17:00
Interactions usually last
from 5 to 20 minutes.

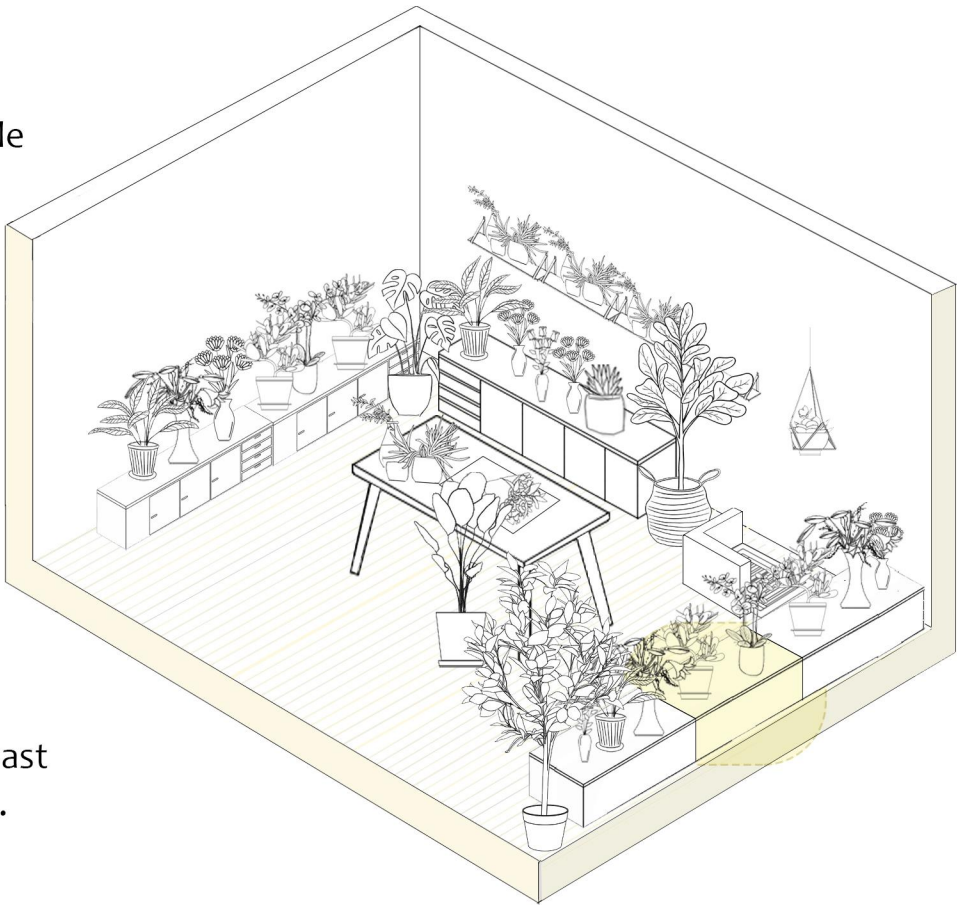


In-line Florist

Maximum of 5 people
at the same time

Opening hours:
Sat 9:00-18:30
Sun 10:00-18:00
Mon-Fri 9:00-18:00

Interactions usually last
from 5 to 15 minutes.

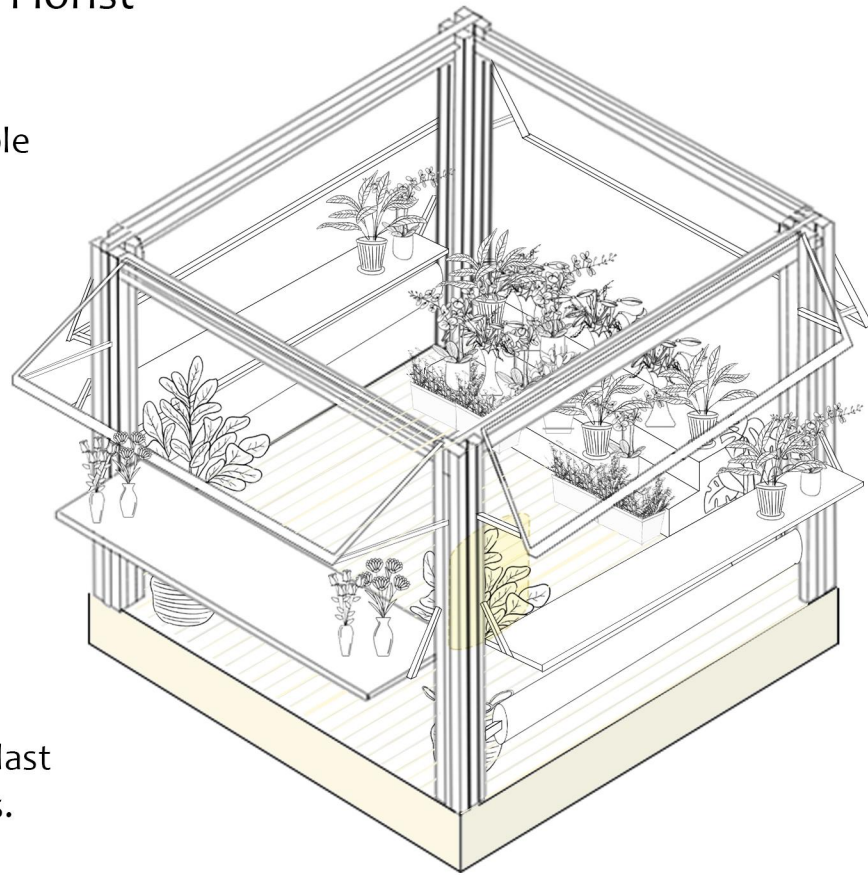


Street-standing Florist

Maximum of 2 people
at the same time

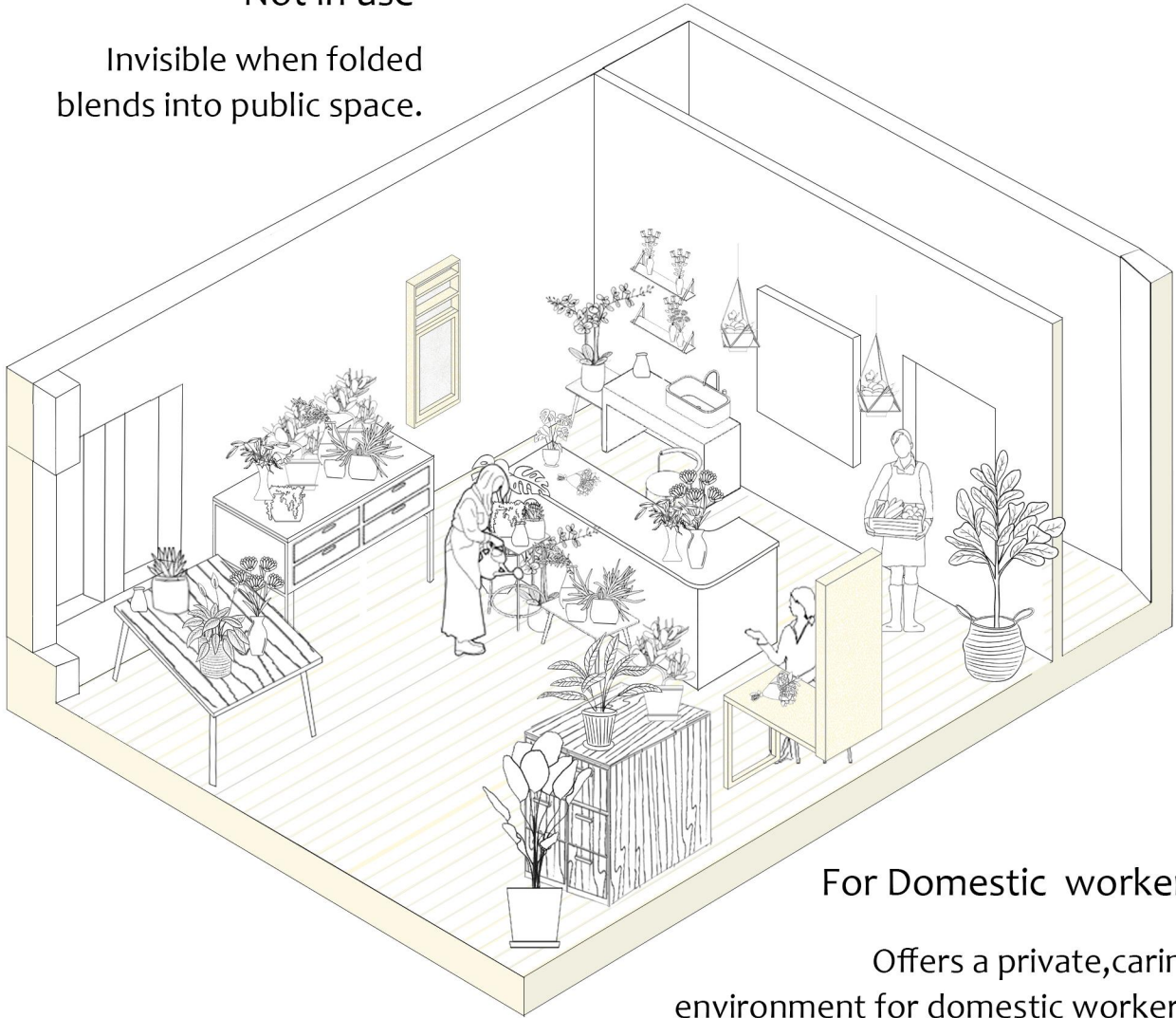
Opening hours:
Sun-Wed 8:00-18:00
Thu-Sat 9:00-18:00

Interactions usually last
from 5 to 10 minutes.



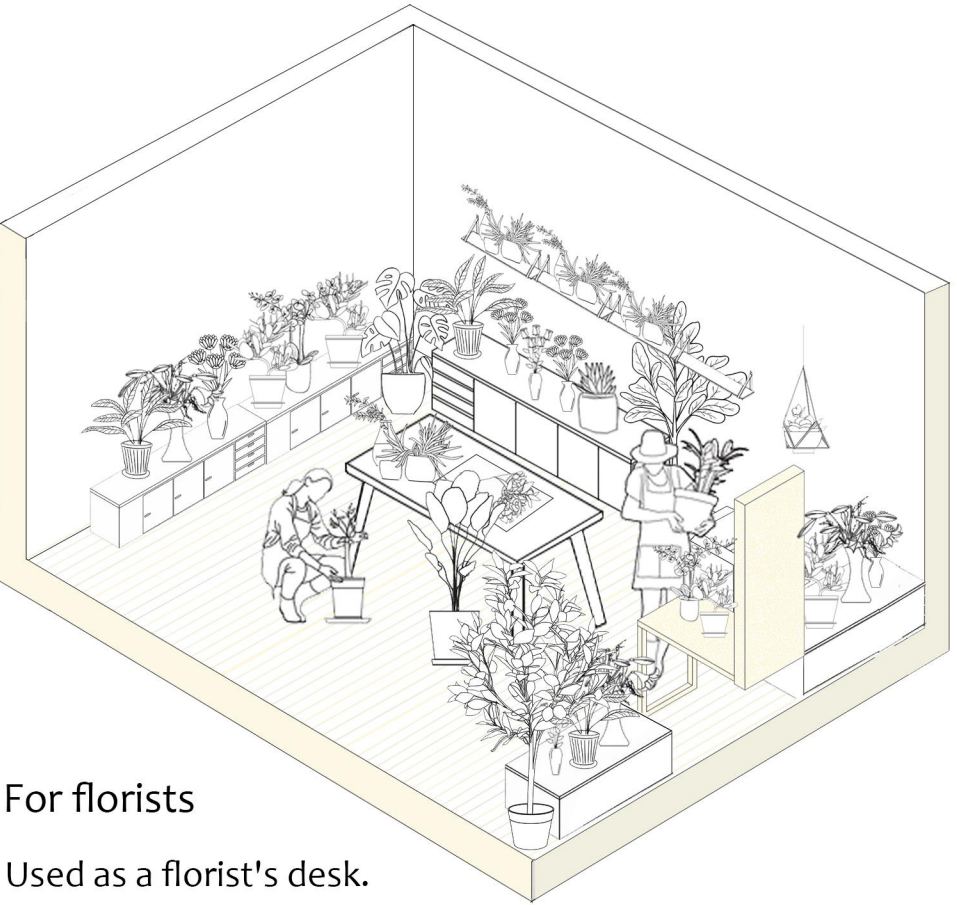
INTERVENTION SCENARIOS

Not in use
Invisible when folded
blends into public space.



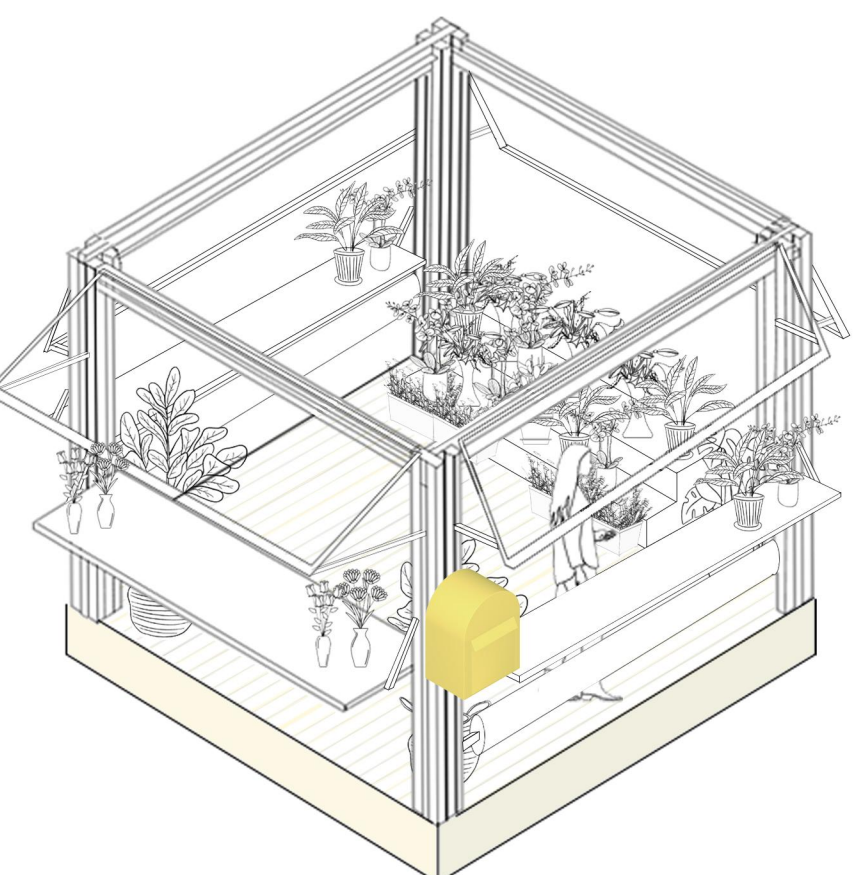
For Domestic workers

Offers a private, caring
environment for domestic workers.

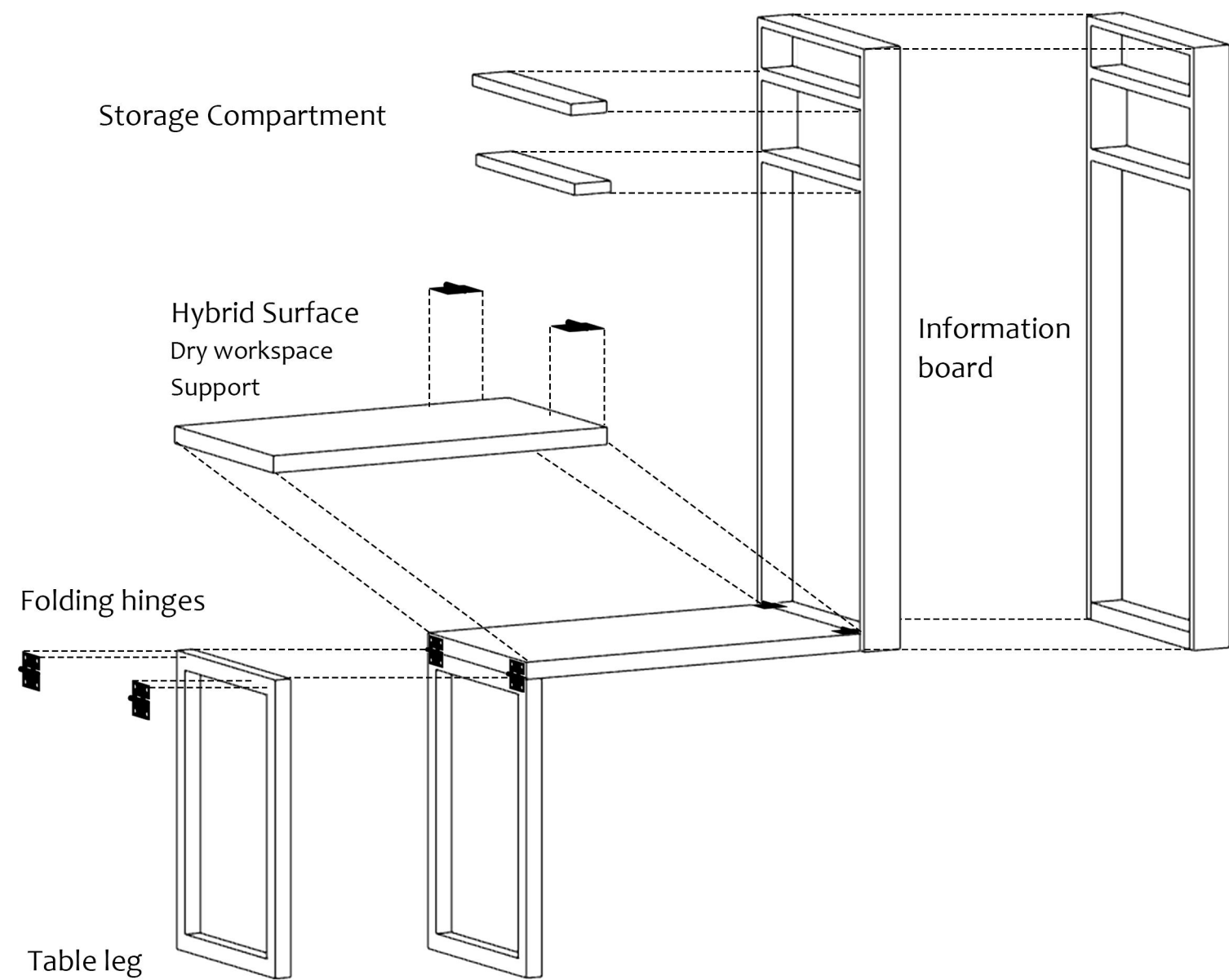


For florists

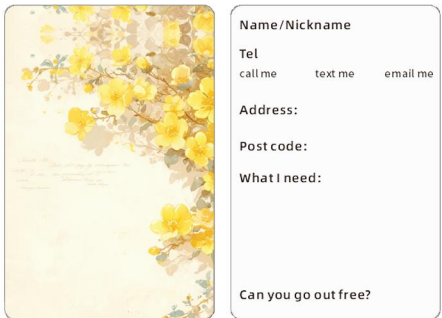
Used as a florist's desk.



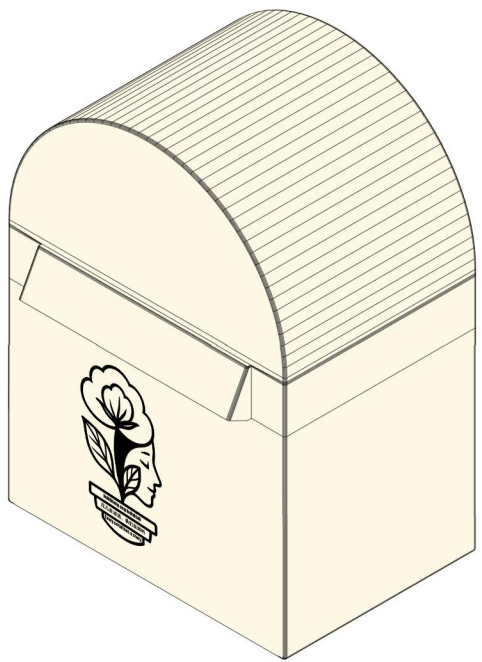
INTERCEPTION STRUCTURE



Storage Compartment hold everyday support objects that are
designed to meet the practical needs of mobile domestic workers
while providing quiet support.

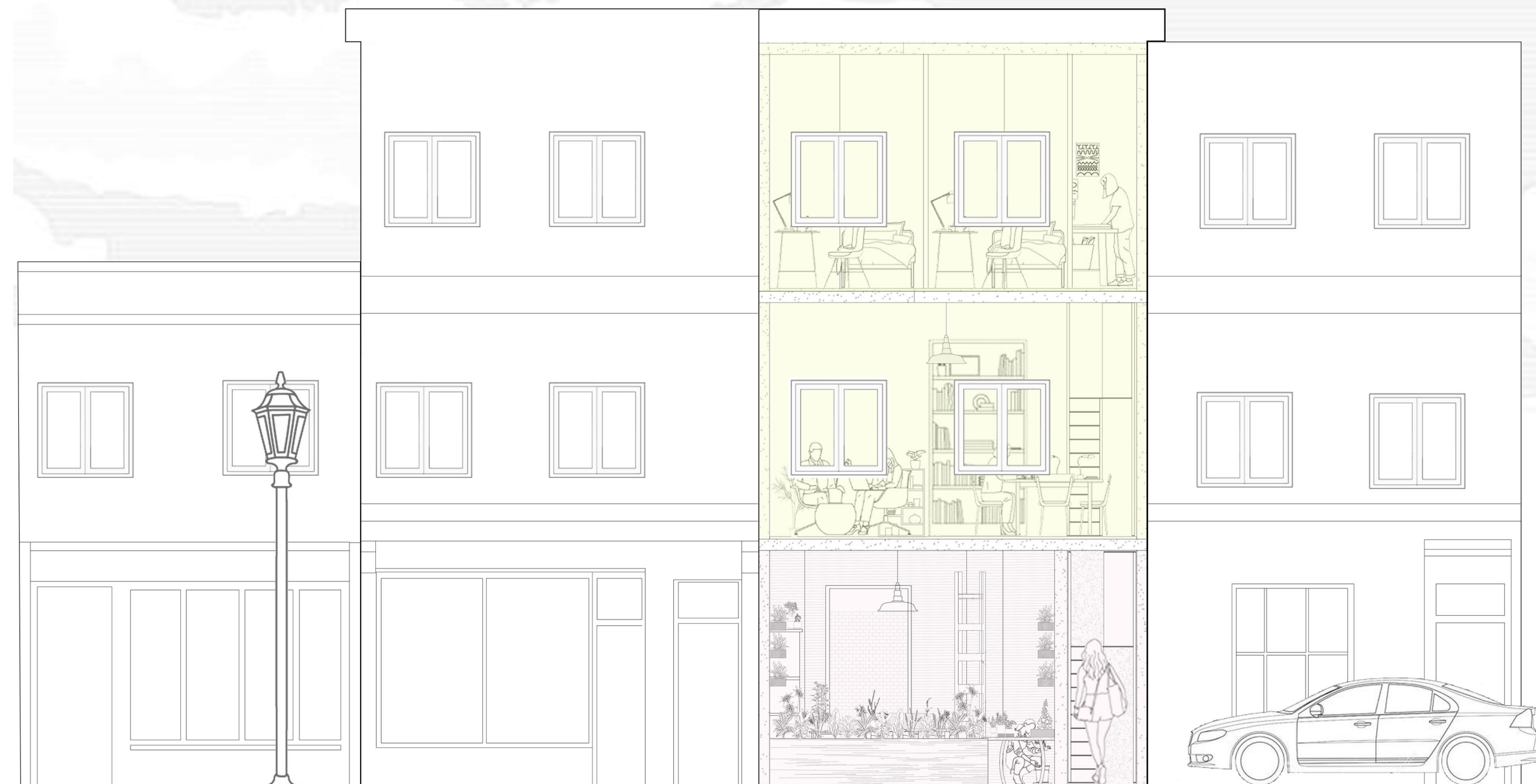
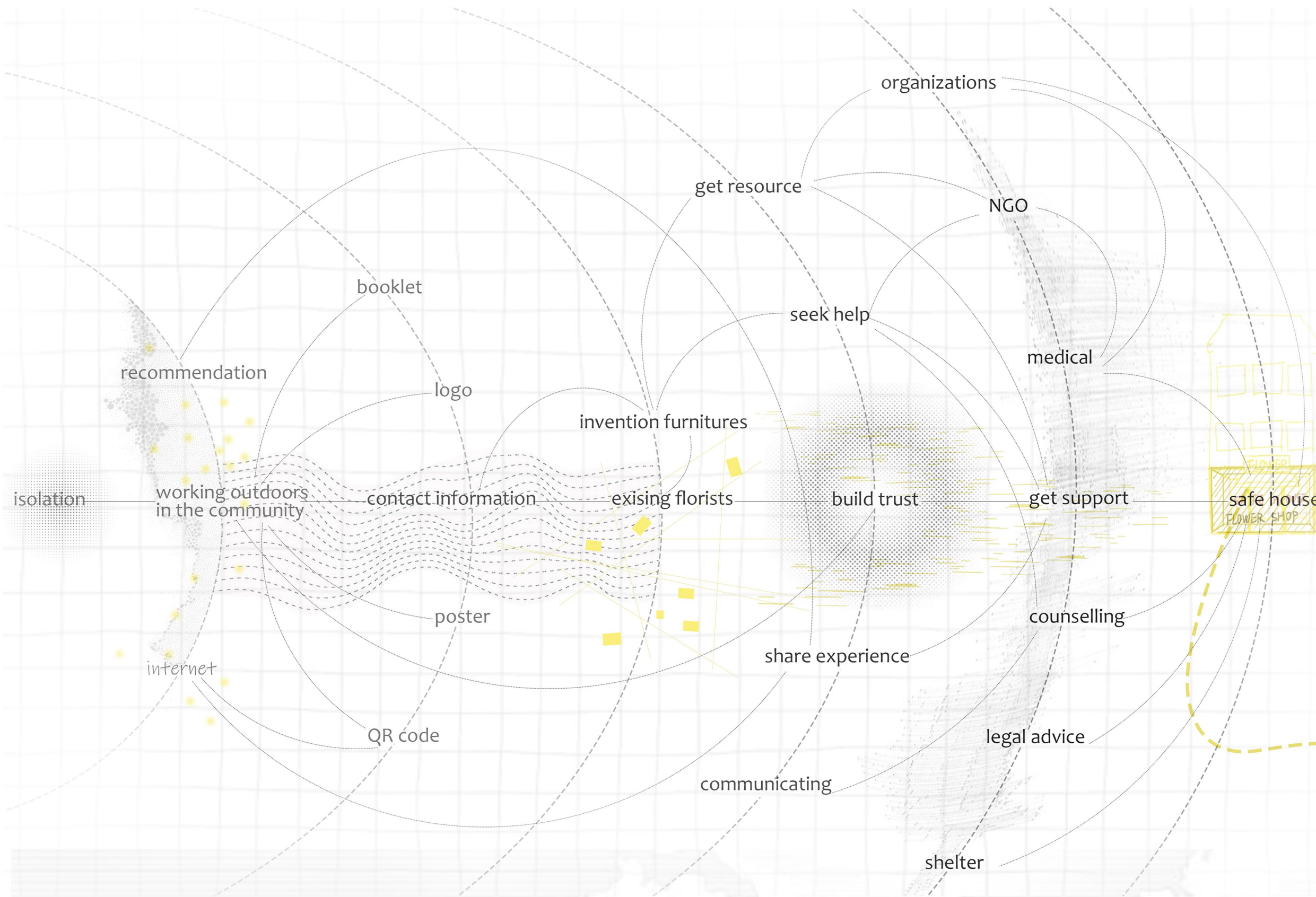


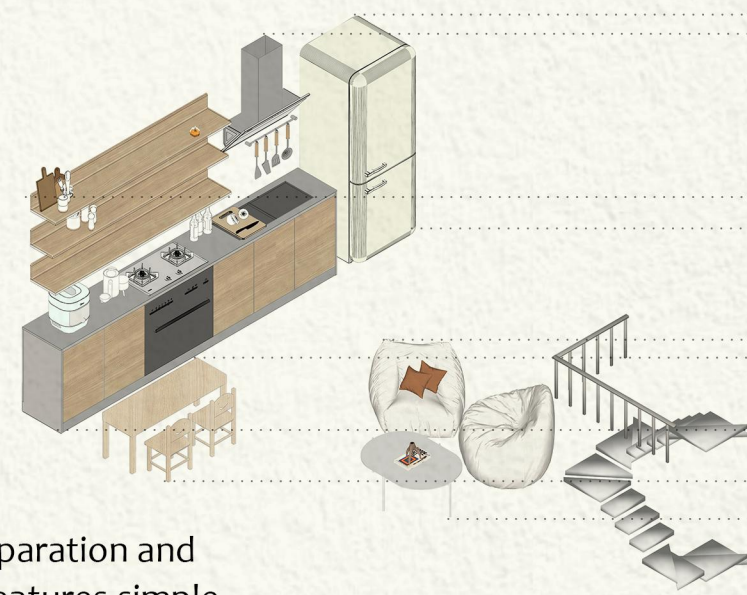
Supporting information and posters are available
on the information board to help migrant domestic
workers broaden their sources of information.



Where spatial constraints prevent the use of intervention
furniture, a suggestion box serves as a covert mailbox—enabling
migrant domestic workers to seek assistance and access
information without attracting attention.

On a daily basis, volunteers or affiliated support personnel retrieve
submitted messages and respond with case-specific assistance,
ensuring each worker receives appropriate and confidential
support.

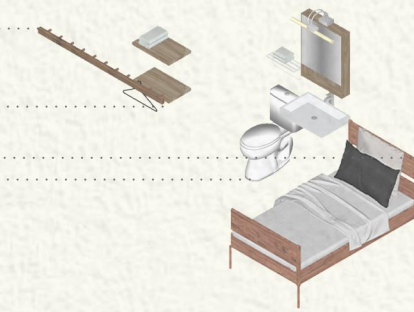




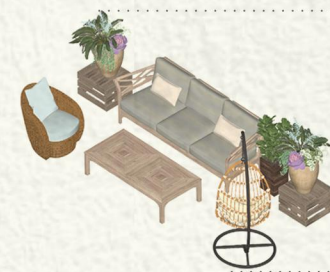
Used for communication, meal preparation and relaxation between occupants, it features simple appliances and storage space to enhance the living experience and sense of belonging.



Two separate rooms, both equipped with en-suite bathrooms, guarantee privacy and are suitable for short-term stays or temporary evacuation.



Proposed awning frame with partial shading to reduce exposure risk from activities inside the safehouse.



Used for sunbathing, gardening or relaxing, it provides daylight and ventilation to enhance living comfort.



1V1 legal counselling room with excellent soundproofing and privacy. Used for private consultations on sensitive issues such as immigration and labour to ensure safety and professionalism.



Fixed office space for organisational staff, including filing, desks, online communication, etc.



Can accommodate counselling or group discussions. It is equipped with movable furniture and soft furnishing enclosure, which facilitates flexible layout.

Semi-open grass space for ventilation, sitting or planting activities, connecting the front shop with the back area functions. Enhances the breathability of the space and sense of community.



Multi-functional for occasional counselling, visitor waiting and psychological relief, it is upholstered with soft furnishings to maintain informality and comfort.

Provides a place for group cooking and shared catering for visitors and asylum seekers. It also serves as a first place for counselling after verification of identity. It is easy to hide the purpose while maintaining continuity with the back of the flower shop.

Separate entrances are provided to ensure privacy of access. Connection to the first floor to avoid crossing the front shop area, suitable for emergency evacuation or out of the employer's sight.

Provides a hidden camouflage for the safehouse. Same as a regular florist, it is equipped with a display of floral arrangements, a cashier's desk, and an operator's desk, forming a daily public interface.

- Identity Verification
- Access to green space
- Through the secret door
- Access to waiting space area

