

REGISTERED REPORTS AT COGNITION AND EMOTION



Carien van Reekum, Ph.D.

Centre for Integrative Neuroscience and Neurodynamics

Department of Psychology

University of Reading

RESEARCH ARTICLE**PSYCHOLOGY**

Estimating the reproducibility of psychological science

Open Science Collaboration*†

Reproducibility is a defining feature of science, but the extent to which it characterizes current research is unknown. We conducted replications of 100 experimental and correlational studies published in three psychology journals using high-powered designs and original materials when available. Replication effects were half the magnitude of original effects, representing a substantial decline. Ninety-seven percent of original studies had statistically significant results. Thirty-six percent of replications had statistically significant results; 47% of original effect sizes were in the 95% confidence interval of the replication effect size; 39% of effects were subjectively rated to have replicated the original result; and if no bias in original results is assumed, combining original and replication results left 68% with statistically significant effects. Correlational tests suggest that replication success was better predicted by the strength of original evidence than by characteristics of the original and replication teams.



Dutch University Sacks Social Psychologist Over Faked Data

by Martin Enserink on 7 September 2011, 5:50 PM | [0 Comments](#)

 [Email](#)  [Print](#) |      [More](#)

[PREVIOUS ARTICLE](#)

[NEXT ARTICLE](#)

AMSTERDAM—A Dutch social psychologist whose eye-catching studies about human behavior were fodder for columnists and policy makers has lost his job after his university concluded that some of the data in those studies were fabricated.

Tilburg University today officially suspended Diederik Stapel, who heads the Tilburg Institute for Behavioral Economics Research. But in a [TV interview](#) today, university Rector Philip Eijlander said that Stapel had admitted to using faked data and said that he would not be allowed to return.

Stapel has worked at the university, located in southern Netherlands, since 2006. He is known as a prolific researcher and a successful fundraiser. His studies appeared to offer new insights into the workings of the human mind; for instance, a [Science paper published in April](#) showed that people are more likely to stereotype or discriminate in messy environments.

[ENLARGE IMAGE](#)



Diederik Stapel

Credit: Tilburg University

Peer review and scientific publishing

**Chris Chambers,
Marcus Munafo
and more than 80
signatories**

Wed 5 Jun 2013 12.45 BST



 
321 43

Trust in science would be improved by study pre-registration

Open letter: We must encourage scientific journals to accept studies before the results are in



▲ The quest: a better understanding of nature. Photograph: Sebastian Kaulitzki/Alamy

Tn an ideal world, scientific discoveries would be independent of what scientists *wanted* to discover. A good researcher would begin with an idea, devise a method to test the idea, run the study as planned, and

REGISTERED REPORTS

AUTHOR AND REVIEWER GUIDELINES

A Registered Report is a form of empirical article offered at *Nature Human Behaviour* in which the methods and proposed analyses are pre-registered and reviewed prior to data collection. The format is offered for hypothesis-driven quantitative research with primary research data. High quality protocols are provisionally accepted for publication before data collection commences. This format is designed to minimize publication bias and research bias in hypothesis-driven research, while also allowing the flexibility to conduct exploratory (unregistered) analyses and report serendipitous findings.

@CarienvanReekum

8:51 AM - 10 Mar 2015

29 Retweets 13 Likes



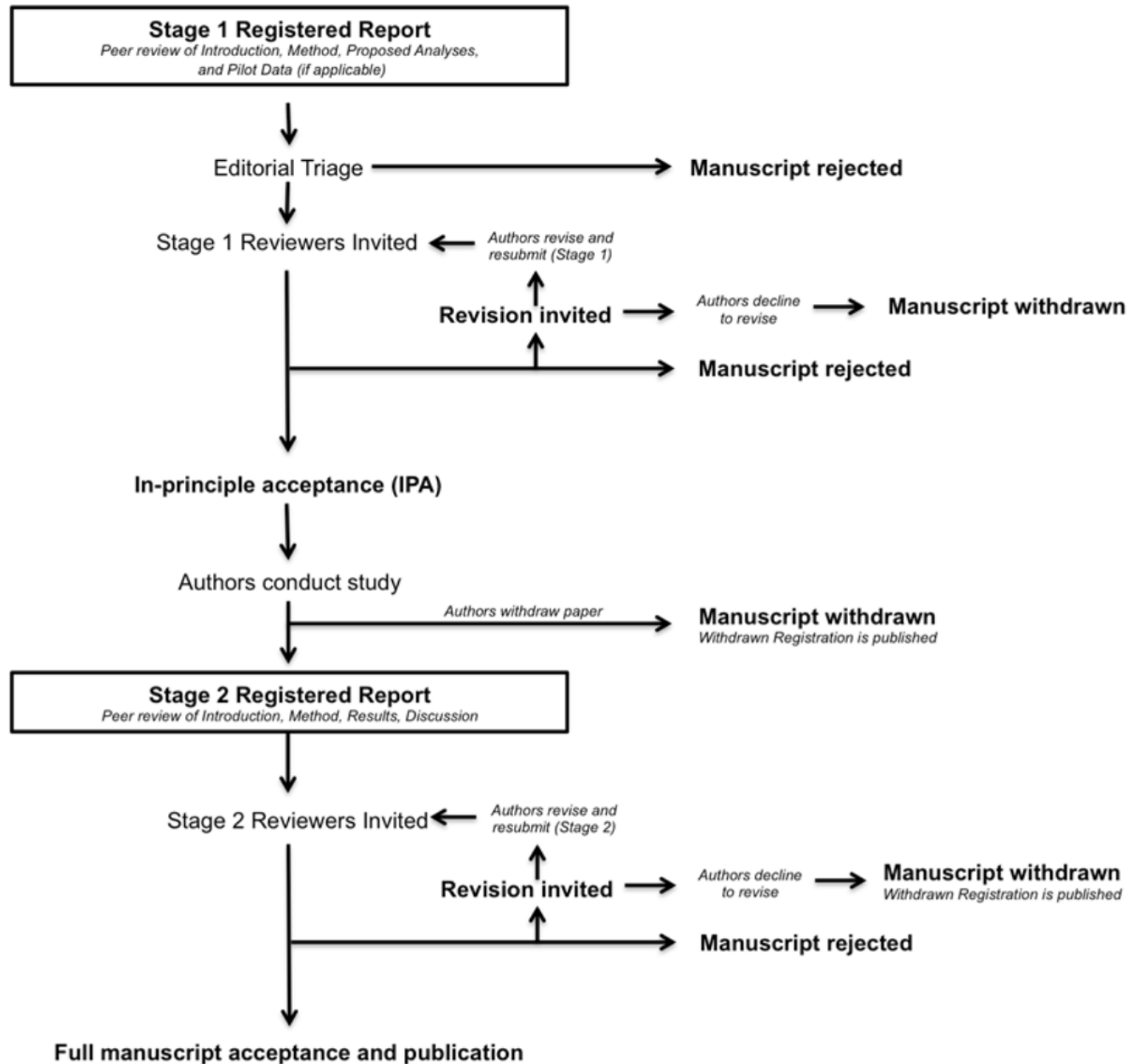
this section to evaluate proposals of research *prior* to data acquisition. *Cognition and Emotion* is pleased to offer this scheme as an outlet for emotion research.

We encourage all our fellow emotion researchers to submit proposals to our new RRR section.

from this model.

Pre-registration of research is likely becoming more prevalent in psychology and cognitive neuroscience, a move we encourage. For now, however, *Cognition and Emotion's* RRR section is not set up to replace the publication of research reports along

The review process for Registered Reports



Chemosignalling effects of human tears revisited: Does exposure to

COGNITION AND EMOTION, 2017
VOL. 31, NO. 3, 625–631
<http://dx.doi.org/10.1080/02699931.2015.1136270>

 **Routledge**
Taylor & Francis Group

BRIEF ARTICLE

.....

COGNITION AND EMOTION, 2018
VOL. 32, NO. 1, 130–144
<https://doi.org/10.1080/02699931.2017.1279591>

 **Routledge**
Taylor & Francis Group

 OPEN ACCESS  Check for updates

COGNITION AND EMOTION, 2018
<https://doi.org/10.1080/02699931.2018.1468732>

 **Routledge**
Taylor & Francis Group

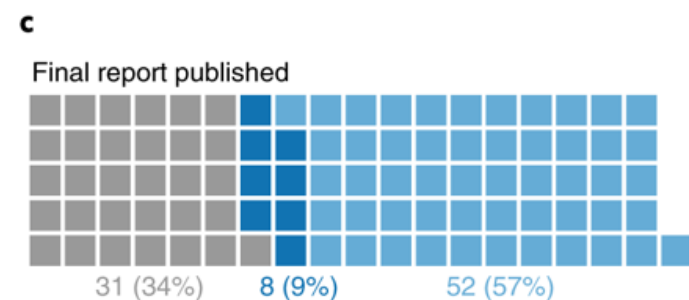
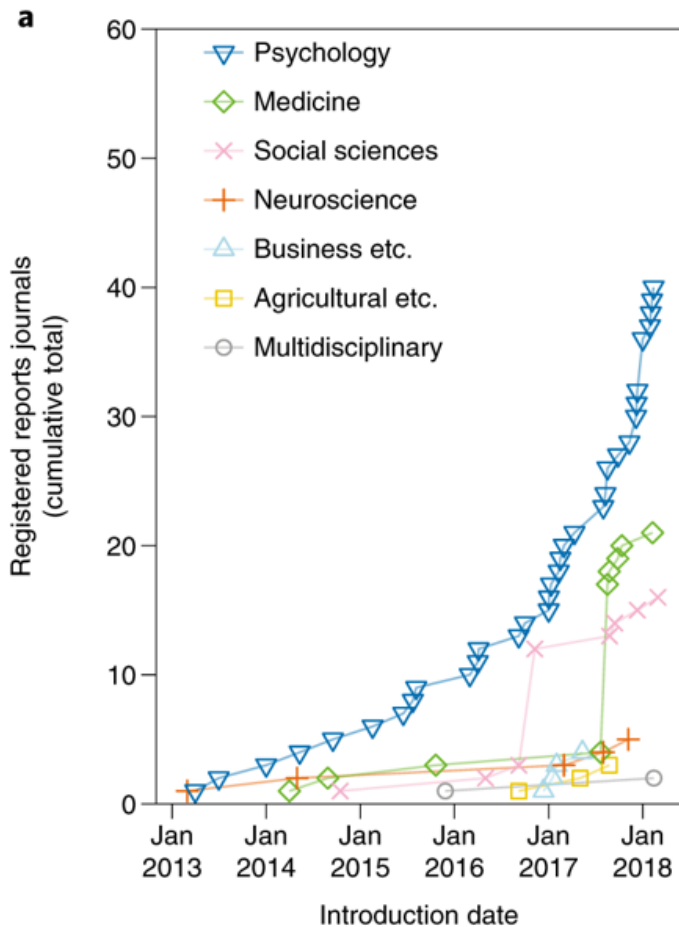
REGISTERED REPORT

 Check for updates

A closer look at the size of the gaze-liking effect: a preregistered replication

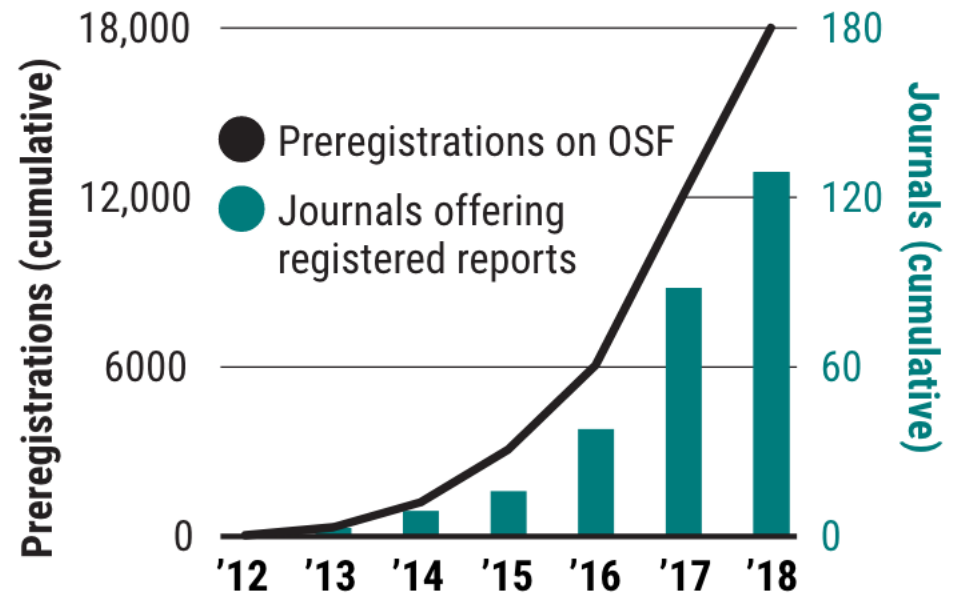
Jason Tipples^a and Anna Pecchinenda^b

^aSchool of Social, Psychological & Communication Sciences, Leeds Beckett University, Leeds, UK; ^bDepartment of Psychology, Sapienza University of Rome, Rome, Italy



Planning ahead

Study preregistrations on the Open Science Framework (OSF) are doubling every year; more than 120 journals have introduced registered reports.



J. YOU/SCIENCE

Kupferschmidt (2018), *Sciencemag* blog,
<https://www.sciencemag.org/news/2018/09/more-and-more-scientists-are-preregistering-their-studies-should-you>

From: Hardwicke & Ioannidis (2018), *Nature Human Behaviour*

A CALL FOR PREREGISTERING YOUR PLANNED WORK

- Registered reports
 - Pro: In Principle Acceptance (IPA)
 - Drawback: Plan ahead! More difficult with trainees
 - Perceived drawback: Low IF journals
- Preregister your planned study/ies on OSF
 - I can see no drawback really (for confirmatory research)
- Secondary data analysis?
 - Yup. Some journals even provide IPA
- Is this the end of “by chance” findings and exploratory research?
 - I hope not! Just don’t HARK (or “shoehorn Thomas Kuhn into Karl Popper” cf Chris Chambers) or employ other QRP
 - See also Cortex’s “Exploratory Reports”

=> Transparency as a driving force



DIALOGUE

The Official Newsletter of the Society for Personality and Social Psychology
Volume 26, No.2, Fall, 2012

If you determined sample size in advance, *say it*.

If you did not drop any variables, *say it*.

If you did not drop any conditions, *say it*.

These 21 words in a Methods section can *say it* succinctly:

“We report how we determined our sample size, all data exclusions (if any), all manipulations, and all measures in the study.”

When needed, supplemental materials can be used to ensure the 21 words are accurate.

When sample size is not determined in advance, one could write:

“We added 50 observations after analyzing the first 100”.

A small but energetic choir may get the entire congregation to sing along.

Ideological Diversity in Social and Personality Psychology, Yoel
Inbar and Joris Lammers

Lights, Camera, Action (Research)!, G. Daniel Lassiter