



UNIVERSITY OF  
LINCOLN

# 2018/19 SUSTAINABILITY IMPACT IN NUMBERS





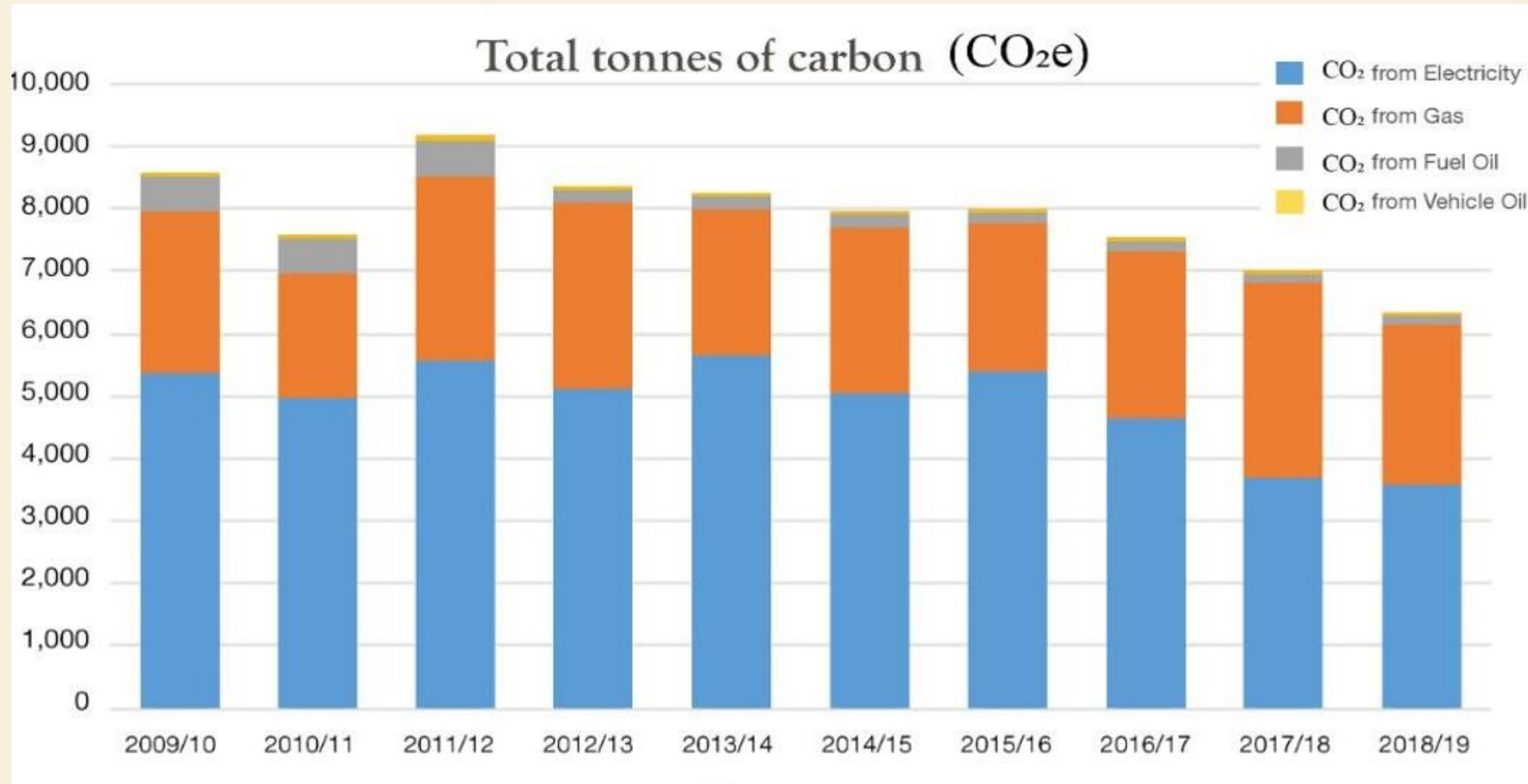
**28.4 GIGAWATTS  
HOURS OF  
ENERGY USED**

**IN 2018/19  
(0.75 GWH LESS THAN 2017/18)**

The background of the image is a landscape at sunset or sunrise. The sky is filled with warm, golden light and scattered clouds. In the middle ground, several industrial smokestacks are visible, with thick plumes of dark smoke rising from them. The foreground is dominated by the dark, silhouetted branches of trees, which frame the bottom and sides of the image. The overall mood is somber and highlights the environmental impact of industry.

**6314 TONNES OF  
CARBON  
PRODUCED**

# IN 2018/19, A 27% REDUCTION IN CO<sub>2</sub> EQUIVALENT WAS MADE, FROM 2009/10





**100% ELECTRICITY PROCURED  
FROM RENEWABLE SOURCES**

**FROM SMARTEST ENERGY**

# **ACHIEVED ECO CAMPUS GOLD ACCREDITATION**

**FOR ENVIRONMENTAL MANAGEMENT**





# **£21K RAISED FOR BRITISH HEART FOUNDATION'S 'PACK FOR GOOD' CAMPAIGN**

**THROUGH DONATIONS OF ITEMS VIA THE BHF CLOTHES  
BANKS ON CAMPUS BETWEEN APRIL-JULY 2019**



# **£135,000 SPENT ON A BUILDING MANAGEMENT SYSTEM UPGRADE**

**PREDICTED TO SAVE 200 TONNES OF CARBON  
PER ANNUM THROUGH ENERGY EFFICIENCY**



**102,514,000  
LITRES OF  
WATER  
CONSUMED**

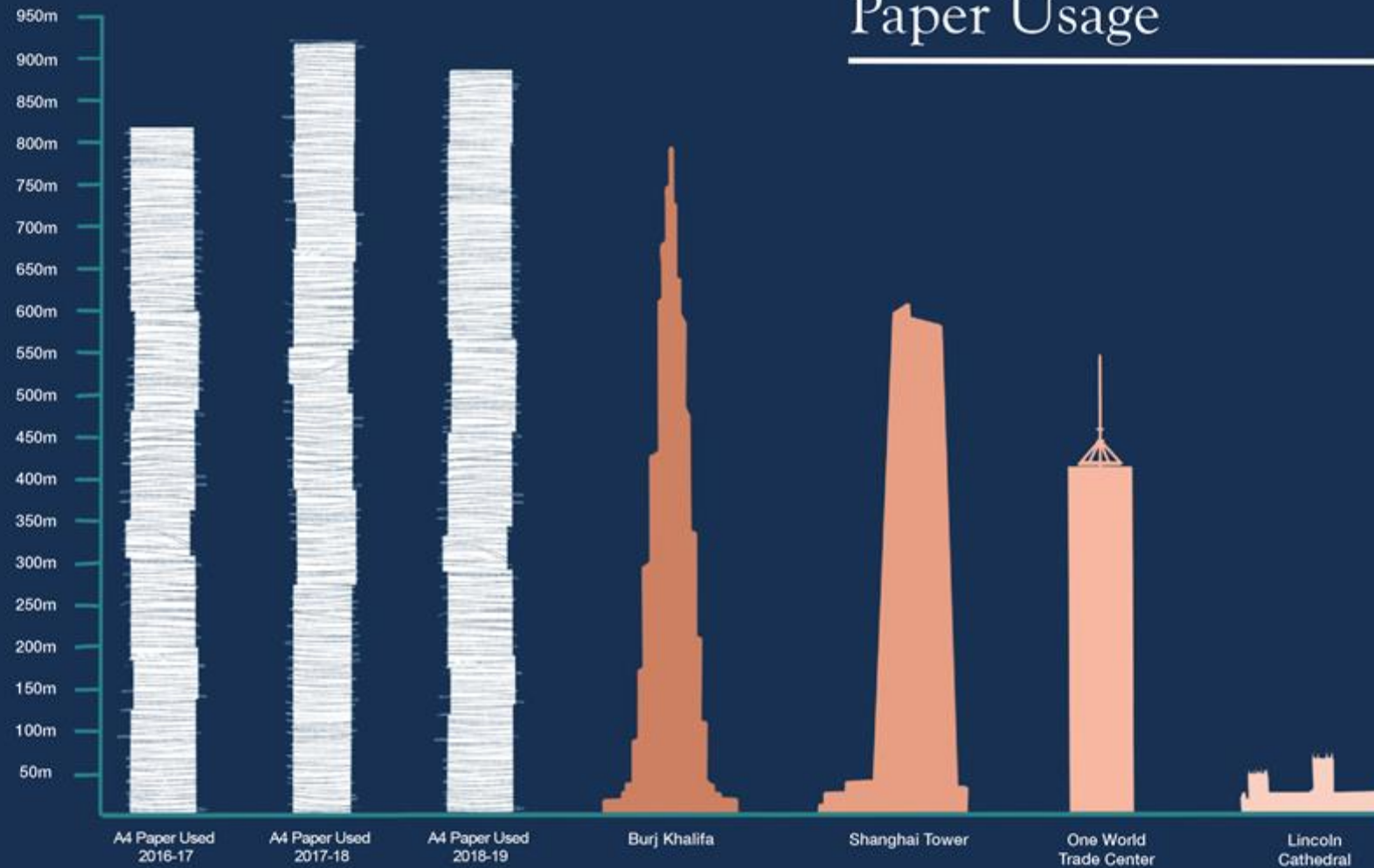
**THAT'S 42% LESS THAN  
2017/18**



# **560 TONNES OF WASTE PRODUCED ON CAMPUS**

**25% OF THIS WAS RECYCLED**


## Paper Usage



In 2018/19 the University used 17662 reams of A4 paper

**ELECTRIC  
CHARGING  
POINTS ON  
CAMPUS WERE  
USED 138  
TIMES**





# **4 ELECTRIC BIKES AVAILABLE FOR STUDENTS TO HIRE ON CAMPUS**

**WORKING IN PARTNERSHIP WITH  
LINCOLNSHIRE COUNTY COUNCIL**

# 1 NEW URBAN BEE GARDEN CREATED ON CAMPUS



A close-up photograph of a honeycomb with many bees crawling on it. The honeycomb is a golden-brown color with a hexagonal pattern. The bees are dark brown and black, with some showing yellow and black stripes. They are scattered across the honeycomb, some moving and others stationary.

# 10,000 BEES AT BRAYFORD

LIVING IN AN OBSERVATION HIVE  
ON CAMPUS



# **20 VOLUNTEER SESSIONS AT OUR KITCHEN GARDEN**

**SOME PRODUCE DONATED TO MINT LANE CAFÉ,  
COOKING MEALS FOR THOSE IN NEED**

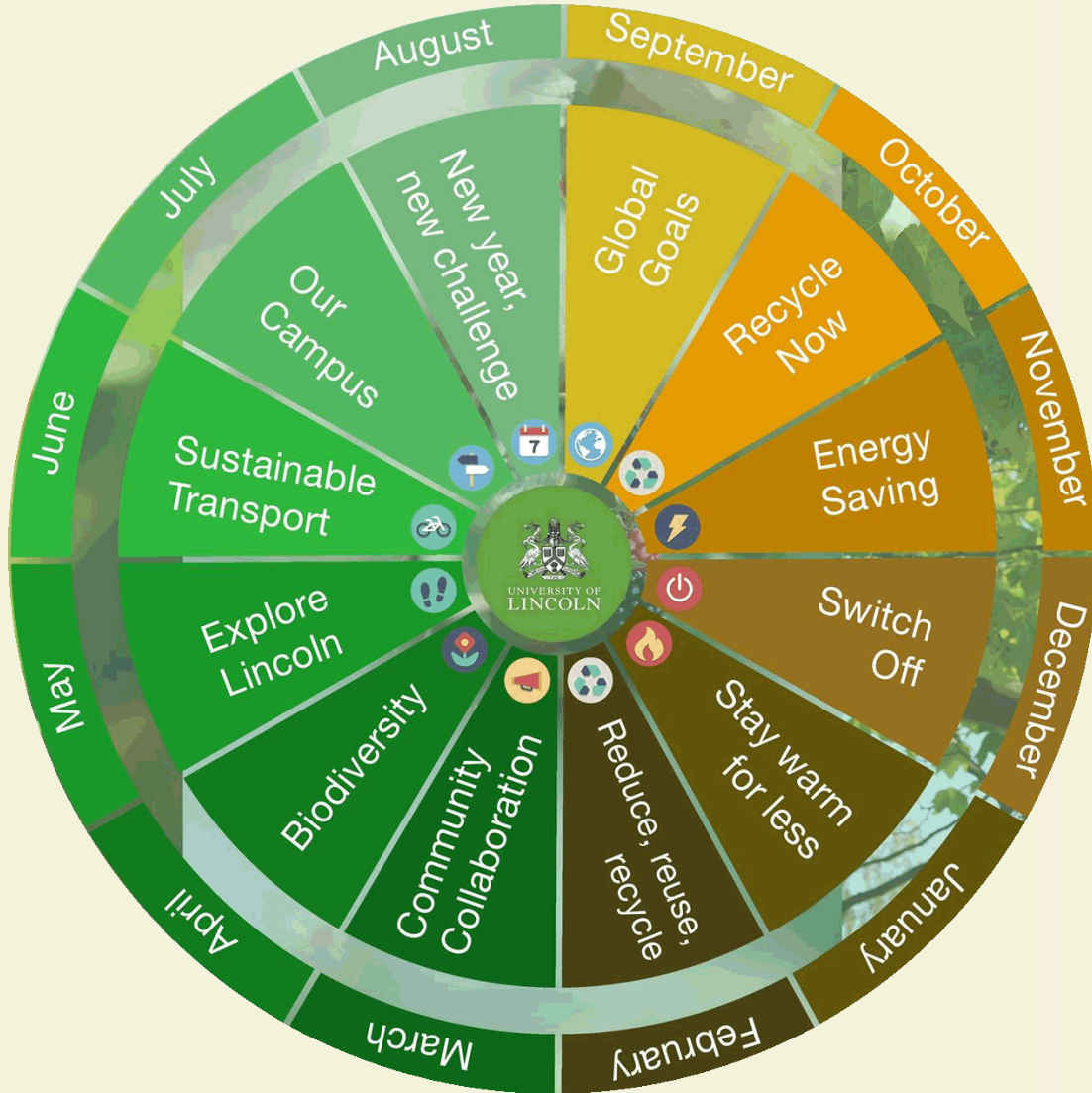


# **10 RARE BREED LONGWOOL SHEEP AT RISEHOLME**

CATEGORY 4 'AT  
RISK', LESS THAN  
1000 EWES IN THE UK

I BEST IN  
SHOW AWARD  
FOR  
RAREBREED  
LINCOLNSHIRE  
RED BULL  
'WOLF'





# 12 MONTHS OF SUSTAINABILITY ENGAGEMENT



# UNIVERSITY OF LINCOLN

Created with images from  
Alexandra Foxley-Johnson Photography, Pixabay  
Free Images