

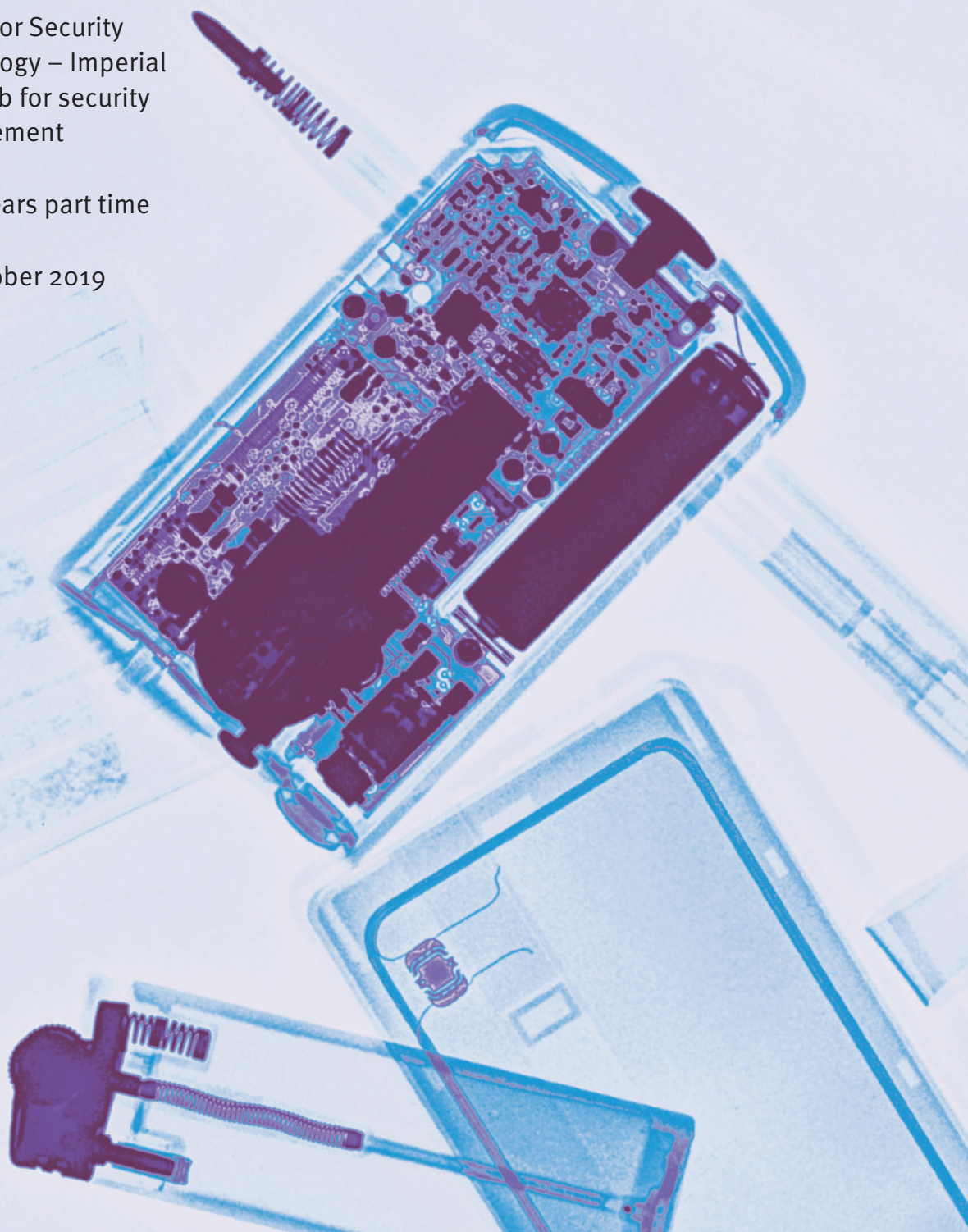
Imperial College
London

MSc in Security and Resilience: Science and Technology

Led by the Institute for Security
Science and Technology – Imperial
College London's hub for security
research and engagement

1 year full time / 2 years part time

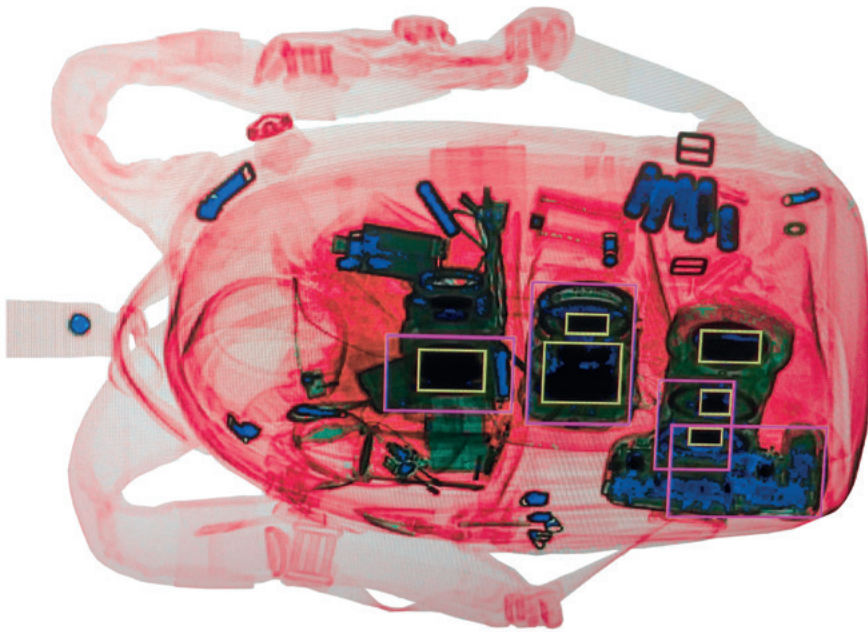
Course starts in October 2019



MSc in Security and Resilience: Science and Technology

This unique MSc course is tailored to training STEM graduates and security professionals in the science and cutting-edge technologies underpinning national security.

Created with significant input from industry, academia and policymakers, the curriculum ensures you'll graduate with industry-ready skills for careers in the growing security and resilience sector.



What you will study

This course is led by Imperial's Institute for Security Science and Technology, whose core activities span across cyber security, physical security and data analytics.

We use our expertise to deliver a programme which combines academic rigour with latest industry knowledge around security science and technology.

You will benefit from core training in risk evaluation and both qualitative and quantitative research methodologies; essential skills in

the security and resilience sector, as well as allied sectors.

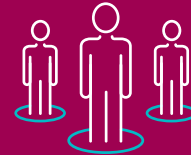
Programme topics include: detection and sensing technologies, threat mitigation and policy, behavioural science, critical infrastructure, CBRNE, cyber security, transport security.

Methods/techniques covered: Monte Carlo risk analysis, data analysis, machine learning, cryptographic protocols, behavioural analysis, intelligence gathering, social network analysis, spectroscopy.

Why Imperial?



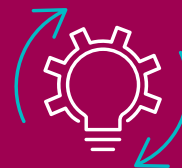
Join a university which is consistently ranked amongst the **top 10 best in the world** (Times Higher Education world university rankings).



Learn from **world leading security experts** with significant real-world experience within the security sector.



Gain exposure to **cutting edge research** in the security sciences.



Enjoy a dynamic enterprise culture within a university ranked the most innovative in the UK (Reuters' Europe's Most Innovative Universities 2018).

Career paths

This course is designed to equip you with a broad range of skills which are in strong demand across industry, policy and academic sectors.



CAREERS IN INDUSTRY

After graduating, you will be well positioned for a career in the security and resilience sector, which employs over 100,000 people in the UK alone. We have connections with major companies in the security sector, giving you valuable insight into potential employers, roles and their requirements.



ENTREPRENEURSHIP

Recent start-ups launched at Imperial College are working in cyber security, next-generation armour and facial recognition. As a student, you'll have access to our Enterprise Lab and Advanced Hackspace, which offer state-of-the-art spaces for building prototypes and co-working, and provide support including mentoring, skills-building programmes and competitions for funding.



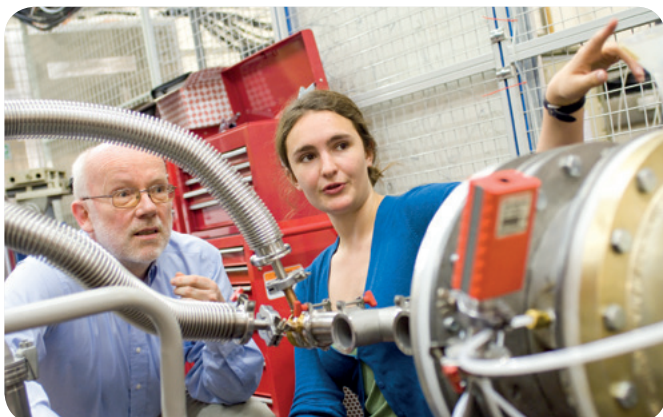
CAREERS IN POLICY

Governments need staff who understand how the science and technology behind security and resilience can inform policy – this is considered throughout the course. You will also learn from staff who have experience of working with various branches of UK Government.



CAREERS IN ACADEMIA

Studying at a research-intensive university means joining a community of world-class researchers. You will have the chance to work alongside leading experts, discuss cutting-edge developments and actively engage with the latest discoveries in the security sciences. This lays a solid foundation for graduates looking to move onto PhD study.



Imperial College London

Institute for Security Science and Technology

www.imperial.ac.uk/security-institute

✉ securityscience@imperial.ac.uk

🐦 [@imperial_isst](https://twitter.com/imperial_isst)

Who we're looking for



This course is open to **all STEM graduates** with a minimum of an Upper Second Class (2.1) UK Honours degree in a relevant discipline.

We also accept a wide range of comparable international qualifications. For further information see: www.imperial.ac.uk/study/pg/apply/requirements/pgacademic

Candidates without the relevant academic background but significant relevant work experience will also be considered.

How to apply



The course starts annually in October. You need to apply direct to the College via our online application system. For further guidance see: www.imperial.ac.uk/study/pg/apply/how-to-apply

Learn more online:
www.imperial.ac.uk/security-institute/education/msc

