

Year 1 Update

Summarising our first year of activity within our 5-year programme funded by UKRI, MRC and ESRC.

In numbers

50+ expressions of interest from 16 universities

Including for UKRI centers; major UKRI NIHR programme bids; and, multiple senior fellowships.

28 research projects approved

Primary areas of interest are mental health and the provision of care, occupation and geospatial/environmental impacts on health and non-communicable diseases.

30+ LPS with >2m participants in discussion to join

4 new LPS onboarding Autumn 2024

Enhancing UK LLC

- Extension of NHS England data for general purpose public good research - currently under review
- Linked Welsh NHS data – available autumn 2024
- Linked Scottish NHS data - currently under review
- Administrative (non-health) data from DWP and HMRC – to be linked in 2024
- **Geospatial data - available now:**
 - Neighbourhood geographies (LSOA)
 - Air pollution, noise pollution, green space
 - Index of Access to Healthy Assets and Hazards and deprivation indices

Publication Highlights

Associations between self-reported healthcare disruption due to covid-19 and avoidable hospital admission: evidence from seven linked longitudinal studies for England | **The BMJ** doi.org/10.1136/bmj-2023-075133 | [Read our feature](#)

The long COVID evidence gap: comparing self-reporting and clinical coding of long COVID using longitudinal study data linked to healthcare records | **The Lancet** [doi.org/10.1016/S0140-6736\(24\)00744-X](https://doi.org/10.1016/S0140-6736(24)00744-X) | [Read our feature](#)

Link to wider publication list and press releases: <https://ukllc.ac.uk/publication-data/>

Publications including LPS Data Managers and PIs

University of Bristol & University of Edinburgh. UK Longitudinal Linkage Collaboration: The National Trusted Research Environment for Longitudinal Research (Research Protocol V2.0). Zenodo; 2023. <https://doi.org/10.5281/zenodo.10868470>

Further UK LLC methods publications under development, all welcome as co-authors.

Shorts



Support for LPS

With your input, we have developed a [library of guidance materials](#) to aid your communications and deliver [key messages](#) about working with UK LLC and record linkage.



Information Security Accreditations

We have maintained our Information Security accreditations (ISO 27001 and Digital Economy Act accredited processing environment – UKSA).



The Team

This year we have welcomed seven [new team members](#). UoB: Abigail, Christian, Rachel. UoE: Julia, Lidis, Alex and our intern Betty.



UK LLC is a collaborator on the following awards:

'A work & health development award' [Martie Von Tongeren / University of Manchester] NIHR

'Improving transparency of processes for accessing health data for research purposes' [Kirsteen Campbell / University of Edinburgh] HDR UK

'HARMONY: A natural language processing approach to enhance data discoverability and data harmonisation' [Bettina Moltrecht / UCL] ESRC Future Data Services

'Optimizing data professional success: identifying skills, career trajectories, and training requirements for enhanced data service delivery' [Elizabeth Green / University of the West of England] ESRC Future Data Services

'An acceptability and governance foundation for linking participant retailer loyalty card records to UK longitudinal population studies' [Anya Skatova / University of Bristol] UKRI Smart Data Research UK

Population Research UK latest

The University of Bristol and UCL are leading the Population Research UK (PRUK) co-ordination hub, part of an existing strategic investment from the UKRI Infrastructure Fund. UK LLC Director, Andy Boyd sits on the PRUK Leadership Group working to deliver the vision and coordinate community activity to enhance infrastructure capabilities and connectivity.

Upcoming conferences with UK LLC presence

Health and Care Analytics (HACA) in Telford (July 2024)

Society of Longitudinal and Lifecourse Studies (SLLS) in Essex (September 2024)

International Population Data Linkage Network (IPDLN) in Chicago (September 2024)

Shorts



BETA

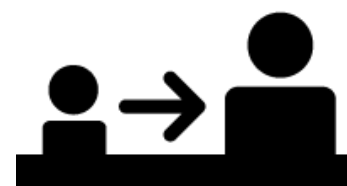
Our metadata catalogue [UK LLC Explore](#) is now online as a beta version under co-development.

This will enable researchers to build a data request to their specification. Please get in touch with feedback and to top-up your data and make it more discoverable.



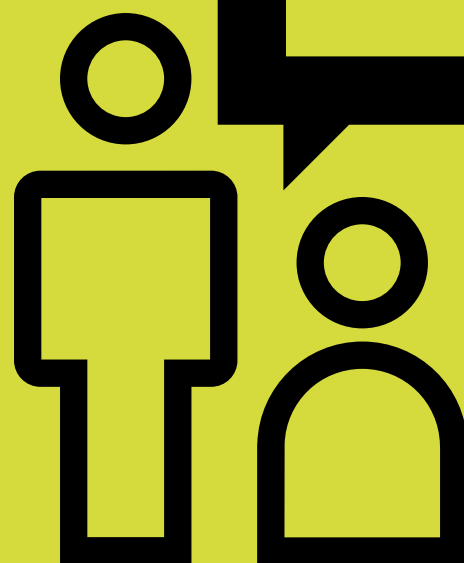
BETA

[UK LLC Guidebook](#) has also been launched in beta version under co-development. This will be the information source for UK LLC's linked data documentation and user guide.



UK LLC remains open to any UK-based LPS to join the collaboration and become a UK LLC partner study.

Thank you!



**For all your help and
support, reviewing
applications, input in
workshops, thoughts and
ideas – this is truly a
collaborative effort!**

UK LLC is run by the Universities of Bristol and Edinburgh, in collaboration with UCL, SeRP UK at Swansea University's Population Data Science and the University of Leicester. It originated as part of the COVID-19 Longitudinal Health and Wellbeing National Core Study. This work is funded by UKRI.