



Newsletter

22 October 2021

Number 1

<https://www.fractures-e3.com/>

CONTENTS

1. Study Overview

2. Study Team

3. Progress

4. Reference and links

5. Contacts

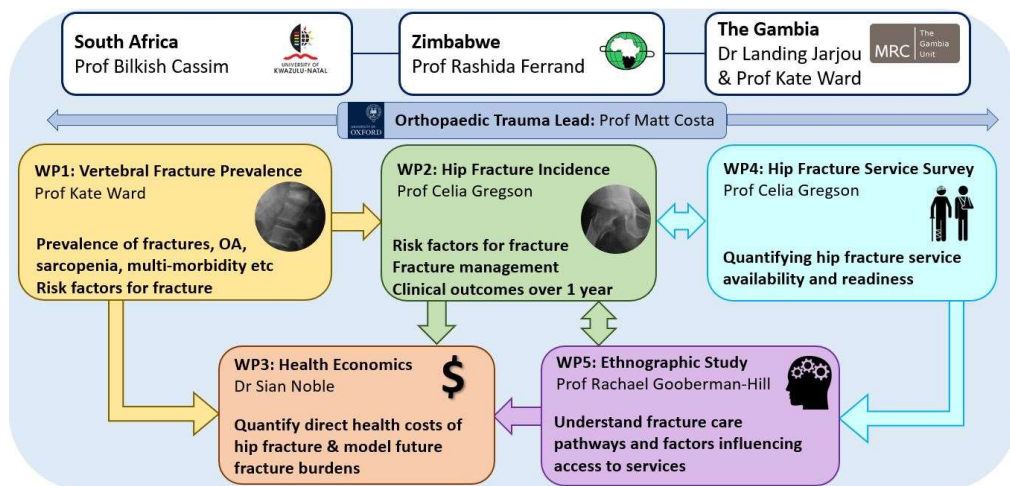
What is the Fractures-E³ Study?

Fractures in sub-Saharan Africa: **E**pidemiology, **E**conomic impact and **E**thnography (the Fractures-E³ study) is a 5-year Wellcome Trust and NIHR funded, mixed-methods study aiming to establish frequency of vertebral and hip fractures, risk factors, health costs, consequences, care pathways and available health services. This research programme will be conducted in South Africa, Zimbabwe and The Gambia.

Why is the study needed?

Life expectancy is rising more rapidly in Africa than any other continent globally. Ageing increases the risk of fractures, which can cause pain, disability, loss of productivity and sometimes death. For countries to plan future healthcare services we need to understand more about fractures, their frequency, the consequences for health, and the financial implications both for patients and for health services.

How is the study structured?



What is the expected impact?

Greater understanding of fracture care can inform health service policy and planning both in the study countries and beyond. For example, it is intended that our findings will influence essential medicines availability, calibrate risk assessment tools for generalised clinical use, inform national clinical guidelines and advise health service development for the future.



Useful Links

<https://www.fractures-e3.com/>

<https://thesamson.org/>

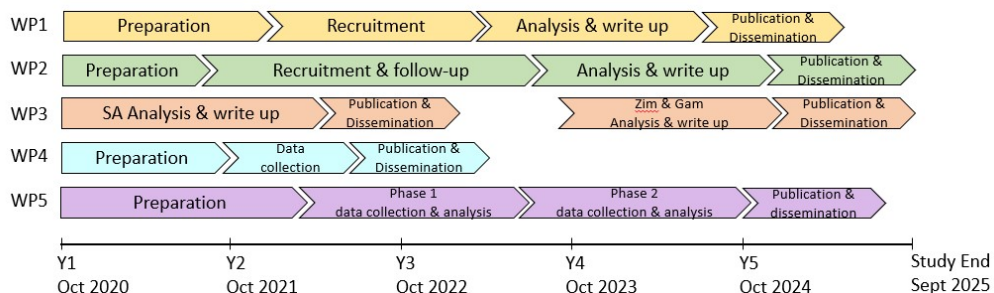
CONTACT

Study email address:
Fractures-E3@bristol.ac.uk

Study Manager:
anya.burton@bristol.ac.uk

Study Chief Investigator:
Celia.gregson@bristol.ac.uk

Timeline



Note: WP Work Package, SA South Africa, Zim Zimbabwe, Gam The Gambia

Progress to date

- Ethics & governance applications for all work packages have been approved
- Study tools have been developed and training for WP2 and WP4 completed
- **WP2 has begun Zimbabwe**
- **First WP2 participant recruited 18/10/2021**
- WP4 will launch across all sites in the coming weeks

Meet the team



Prof. Celia Gregson
Chief Investigator and
WP2 and WP4 Lead
University of Bristol, UK



Prof. Bilkish Cassim
South Africa Lead
University of KwaZulu
Natal, South Africa



Prof. Rashida Ferrand
Zimbabwe Lead
Biomedical Research and
Training Institute,
Zimbabwe and London
School of Hygiene and
Tropical Medicine, UK



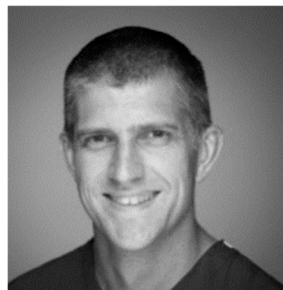
Dr Landing Jarjou
Co-Gambia Lead
MRC Gambia, The Gambia



Prof. Kate Ward
WP1 Lead and Co-
Gambia Lead
University of Southampton,
UK and MRC Gambia, The
Gambia



**Prof. Rachael
Goberman-Hill**
WP5 Lead
University of Bristol, UK



Prof. Matt Costa
Orthopaedic Trauma
Lead
University of Oxford, UK



Dr Sian Noble
WP3 Lead
University of Bristol, UK

Stay in touch

If you'd like to be kept informed about the study join our mailing list at <https://www.fractures-e3.com/newsletters/>

References and further reading

Gregson CL, Cassim B, Micklesfield LK, Lukhele M, Ferrand, RA, Ward KA on behalf of the SAMSON Collaborative Working Group. **Fragility fractures in sub-Saharan Africa: time to break the myth.** *Lancet Global Health* 2019;7(1):E26-E27.
[https://www.thelancet.com/journals/langlo/article/PIIS2214-109X\(18\)30412-1/fulltext](https://www.thelancet.com/journals/langlo/article/PIIS2214-109X(18)30412-1/fulltext)