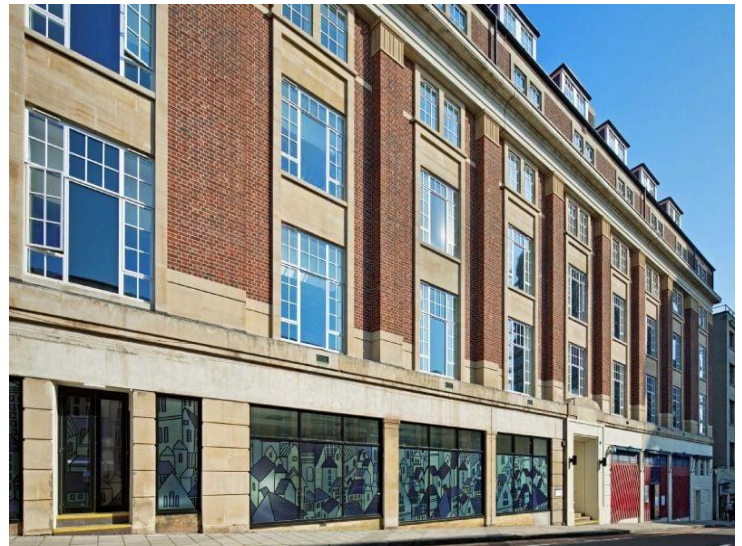


# Welcome to Accommodation at 33

Accommodation at 33 offers an ensuite, self-catered accommodation for over 100 students in the heart of the city. Residences are within short walking distance of the campus as well as being surrounded by many shops, cafes, bars and restaurants.

Nearby shopping centers include Cabot Circus, The Galleries and Broadmead, which together have over 500 stores, cafes and restaurants. You will have the best of Bristol's nightlife on your doorstep.

The following page provides you with all of the information required prior to arrival. If you cannot find the information you need, please do not hesitate to contact the Venues and Events Office — we are happy to help! The contact number for our team can be found below.



## Accommodation details

### Bedrooms

There are 113 sleeping spaces available at Accommodation at 33 and varying room sizes; Basic, Standard, and Standard Plus but all with an en-suite bathroom.

Rooms contain a wardrobe, desk and chair, 4ft bed, mattress cover, pillow, sheet, duvet, pillowcase and duvet cover. Clean bed linen and a towel will be provided once a week. Toiletries are provided on arrival and not replenished.

Each flat has a large kitchen and social space which will include a kitchen pack containing the basics you will need for your stay. Tea and coffee making facilities available.

Please note that the building is not accessible and all flats are accessed via stairs.

## Amenities

**Accommodation at 33 boasts excellent facilities. Guests may make use of:**

- Launderette
- Common room
- Study room
- Bike storage
- Internet access
- Large kitchen dining space

**Check in is available from 2pm to 10pm on the day of arrival.  
Check out is by 10.00am on day of departure.**



## Accommodation at 33 Location



## Contact Numbers

<u>Venues and Events Team</u> Mon-Fri 9.00am-5.00pm	+44 (0)117 42 84000
<u>Reception</u> Mon-Fri 4.00pm – 10.00pm Weekends 8.00am – 10.00pm	+44 (0) 07971 725893
<u>Out of Hours Duty Mobile</u> After 10.00pm – for emergencies only	+44 (0) 7971 725893
<u>Security Services</u>	+44 (0)117 92 87848
<u>University Emergency Security</u>	+44 (0)117 33 11223

## Facilities and Information

### Kitchens

There is a large kitchen diner space with sofas.

### Launderette

The launderette is on the lower ground floor. Laundry payment is made via the Wash Station app. Please visit <https://www.washstation.co.uk/> to create and account. Further information is displayed on the machines.

### Accessibility

Please note that the building is not accessible and all flats are accessed via stairs. A goods lift is accessible for the transport of items/goods only, strictly no persons may use the lift. We advise you to contact the Venues and Events Office as early as possible to discuss the provision of additional support for delegates with disability.

### Cleaning

Kitchens and bathrooms are service cleaned once a week.

### Internet

Is available free via UoB Guest. Select 'UoB Guest' from the available network list, open your internet browser and follow the instructions on screen.

### Mail

Please ensure any mail is addressed to yourself and includes you flat number so it can be added to the secure mailbox. The check-in team will be able to give you the access code for the mailbox once you check in. Please note that the post room is not staffed so any packages needing a signature will need to be organised at a time when you are in the building to accept delivery.

### Sporting Facilities

The Centre for Sport, Exercise and Health is located in the University Precinct on Tyndall Avenue. Please contact the centre prior to visiting on +44 0117 428 3200. There is a charge for the use of these facilities.

### Nearby

Accommodation at 33 is conveniently located within walking distance of the University campus and main shopping and entertainment areas, including Broadmead, the Triangle, Park Street and the Harbourside.

### Banks

The nearest cash machine is Sainsburys Local (9 Broad Quay, Bristol BS1 4DA).

### Chemists

Nearest Boots (19-20 St Augustine's Parade, Bristol BS1 4UR)

**!** Please note that any electrical items brought on-site must be PAT tested.



### Important Information

#### Fire Safety

On arrival, please read the information on action in the event of a fire provided on the back of your door. No propping open of Fire Doors. Please note that the Residential Facilities Coordinator will carry out regular checks on fire doors. The fire assembly point is located directly across the road at Prince William House.

There will be a fire alarm test on a Wednesday each week.

#### Smoking

Please note smoking is not permitted within Accommodation at 33 or outside the front entrance

#### Lock-outs and Lost/Mislaidd Cards

Your key card will be programmed to allow access to your flat and bedroom and you must keep the card on you at all times. **Do not** leave your key card inside your bedroom as you will be locked out. If you do lock yourself out of your room or lose your card please contact **reception or the out of hours porter** to allow access. Please note that this may take a while especially during the night. If you lose your card you will be charged for a replacement.

#### Security

Please keep your door locked whenever you are not in your bedroom, even if only for a few minutes. Main entrance and flat doors should also be kept locked. The University's Security Officers patrol the premises at night. Please report anything suspicious to them immediately.

#### Children

All guests must be over 18.

#### Visiting Guests

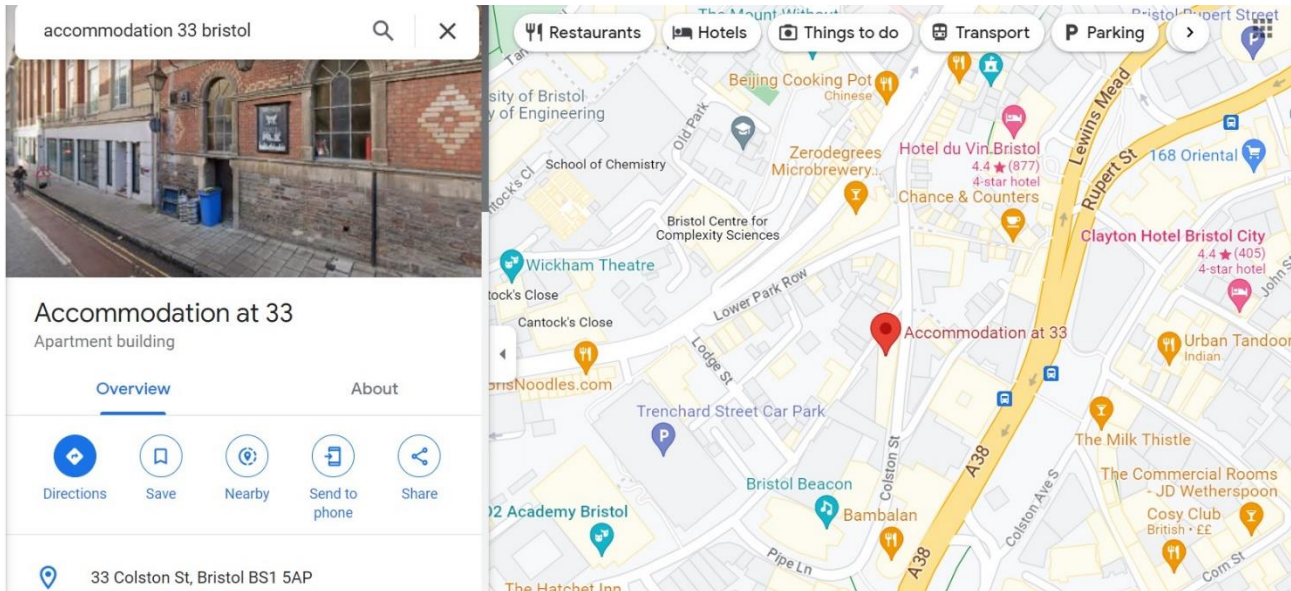
Overnight guests are not permitted except by permission of the University. You are responsible for the behavior of any visitors and in the event of the fire alarm sounding you are responsible for ensuring that your guests leave the building.

#### Noise

Please show consideration for others at all times and keep noise levels down.

**If you have any problems with your accommodation please inform the Residential Facilities Coordinator or Venues and Events Office as soon as possible.**

# Directions and travel information



## Travel Information

### Local Buses

The following bus services run to within walking distance of Accommodation at 33:

These bus services run from Bristol Temple Meads train station:

**A1:** Alight at The Centre and walk approx. 4 minutes

**376:** Alight at Wine Street and walk approx. 9 minutes

**X39:** Alight at Wine Street and walk approx. 9 minutes

Bus timetables and journey planners can be found here:

[www.firstgroup.com/bristol-bath-and-west/plan-journey/timetables/](http://www.firstgroup.com/bristol-bath-and-west/plan-journey/timetables/)

### Directions by Car

Exit M4 at Junction 19 marked for the M32. Follow the M32 into Bristol. At St. James Barton roundabout take the second exit onto B4051 / Marlborough Street. After passing the BRI, take a left onto Colston Street. Accommodation at 33 will appear on your right.

There is a car park nearby (Trenchard Street Car Park) on Trenchard Street, BS1 5AN.

### Other Transport

If you are travelling by car, train or plane please visit the following website for further information:

[www.bris.ac.uk/maps/](http://www.bris.ac.uk/maps/)

### Taxi

V Cars Bristol: +44 (0) 117 925 2626

### By Train

Bristol Temple Meads is the closest train station.

### By Air

Bristol International Airport is only 13 kilometres to the south of the city. The Bristol flyer provides a bus service from the airport into the city centre. For more information please visit:

[flyer.bristolairport.co.uk](http://flyer.bristolairport.co.uk)

### Bike

There is a bike lock up room located at the back of the building. No electric bikes are permitted due to fire risk assessment.