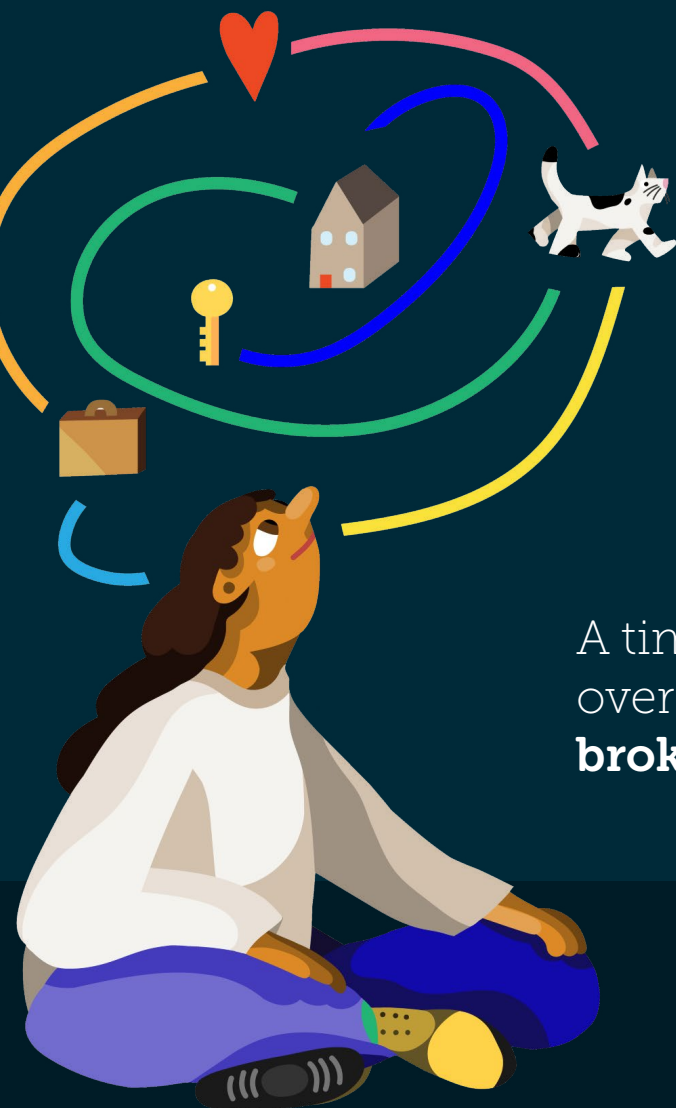


Transforming Care?

Are we improving health and care services for learning disabled people?



A timeline review of
over a decade of
broken promises

Transforming Care Targets

- 1 All current placements will be reviewed by 1 June 2013, and everyone inappropriately in hospital will move to community-based support as quickly as possible, and no later than 1 June 2014 (DH, 2012) **MISSED**
- 2 NHS England has stated its ambition to achieve a 50% reduction in the number of people who were in in-patient beds on 1 April this year by March 2015 (Hansard, 3 December 2014) **MISSED**
- 3 Closing, at a minimum, between 35% - 50% of inpatient provision nationally (NHSE, 2015, 27) **MISSED**
- 4 By March 2023/24, inpatient provision will have reduced to less than half of 2015 levels (on a like for like basis and taking into account population growth) and, for every one million adults, there will be no more than 30 people with a learning disability and/or autism cared for in an inpatient unit. For children and young people, no more than 12 to 15 children with a learning disability, autism or both per million, will be cared for in an inpatient facility (NHSE, 2019, 53) **MISSED**



By March 2024 all promises had been broken

The Assuring Transformation dataset said there were 2,230 inpatients (March data reported in October 2024). This is a 23% decrease on the March 2015 number (of 2,905 inpatients).

The Mental Health Services Data Set said there were 3,620 inpatients (March data reported in May 2024). This is a 12% increase on the 3000 people reported in the Learning Disability Census in September 2015. Whichever dataset is considered, progress is nowhere near where it should be.

In March 2024 there were 44 people with a learning disability and/or autism in inpatient units for every million adults, a figure which has shown no change since it was first recorded in November 2020 (as reported in the April 2021 dataset).

Have you got ideas about how to change things?
Can you think of things you or your organisation could do?
How can we get more people to care, and to act?
How do we prevent another decade of broken promises?

Please drop us a line at ReignitingDebate@gmail.com.
Share your ideas, or if you prefer your contact details and we will get in touch with you.

Who we are

We are a team of researchers from Bristol, Sheffield and Manchester Metropolitan Universities working together with self-advocacy organisations, Sunderland People First and My Life My Choice and a group of and for parents/carers, Bringing Us Together.

This project

We are interested in why there has been so little change for people with learning disabilities on important things like having a job, a place to call home, fair access to health and social care services.

You can find out more about our work including easy-read documents at:
<https://reignitingdebate.blogs.bristol.ac.uk/>

This work was funded by the National Institute for Health & Care Research (NIHR), School for Social Care Research. The views expressed are those of the authors and not necessarily those of the NIHR or the Department of Health and Social Care.

The front-page image was produced by Grace Barnes.

