

ELEVATE

Innovative Light **EL**ectric **V**ehicles for **A**ctive and
Digital **T**rav**EL**



UNIVERSITY OF LEEDS
Institute for Transport Studies

EPSRC

Engineering and Physical Sciences
Research Council



University of Brighton



UNIVERSITY OF
OXFORD



Raleigh Stride

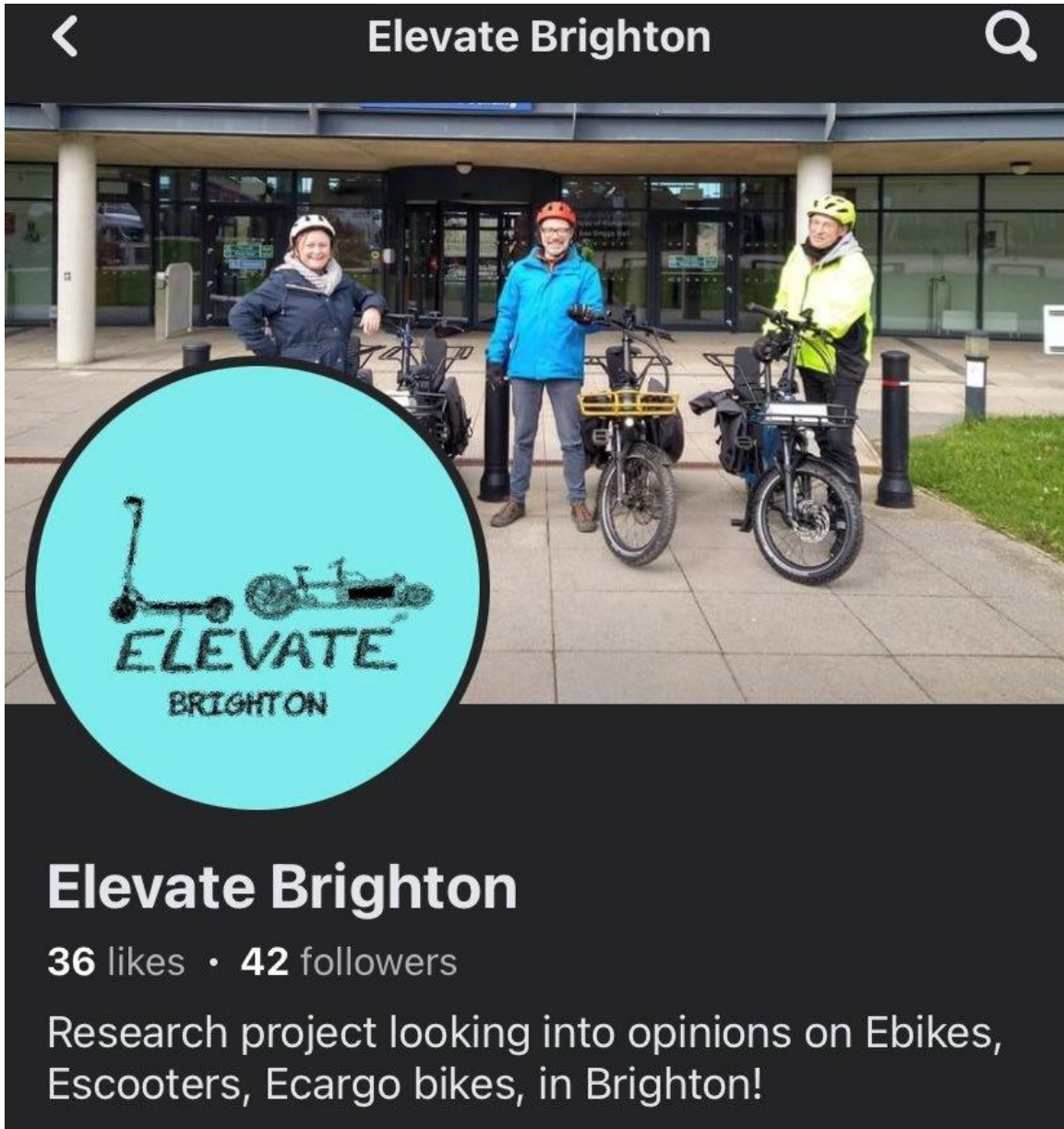


Tern GSD



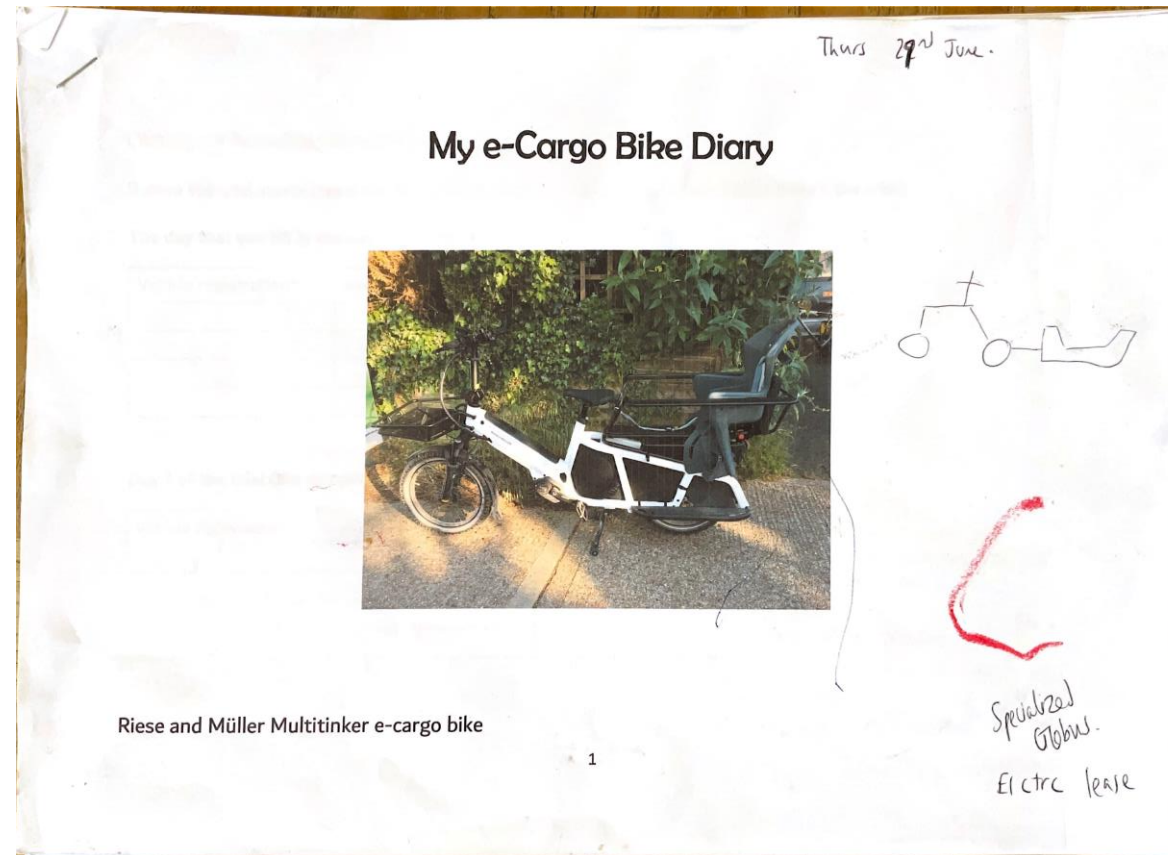
Riese and Müller Multitinker

DATA COLLECTION

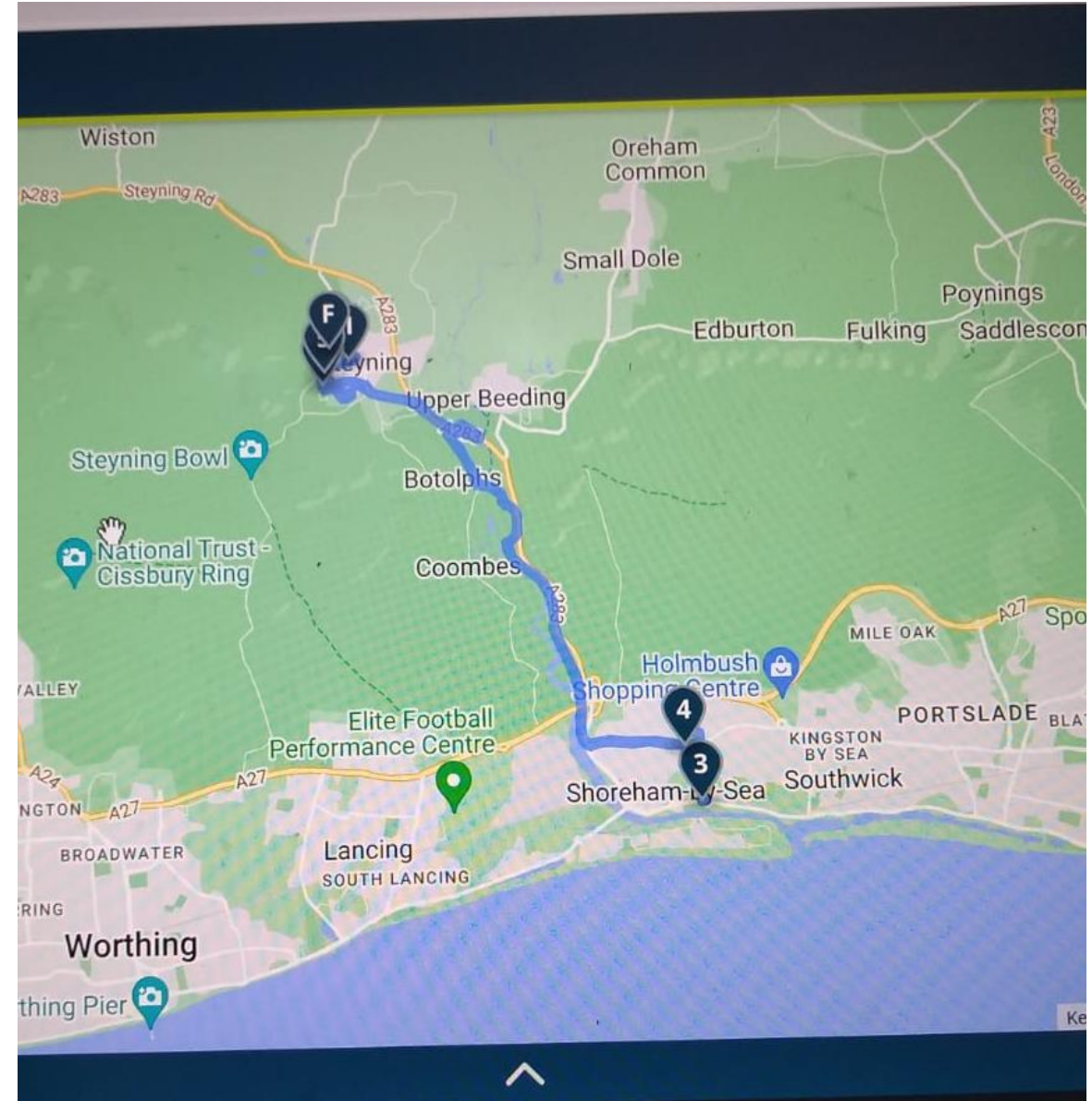


- National YouGov survey
- Facebook page
- Local survey used to gather general mobility data and recruit participants
- Facebook comments also collected

TRAVEL DIARIES



GPS TRACKING





WEEKLY INTERVIEWS



Current analysis:

GPS data - trip frequencies, durations, times of day, routes, destinations

Travel diary data - trip purpose, weather dependency, modal substitution

Interviews coded – 80 themes – road surface, digital interface issues, mental health, multi-mode trip linking, social interactions, future imagined use...

HARD(ER) DATA



- Typical Brighton use radius 30 minutes / 5-6 miles

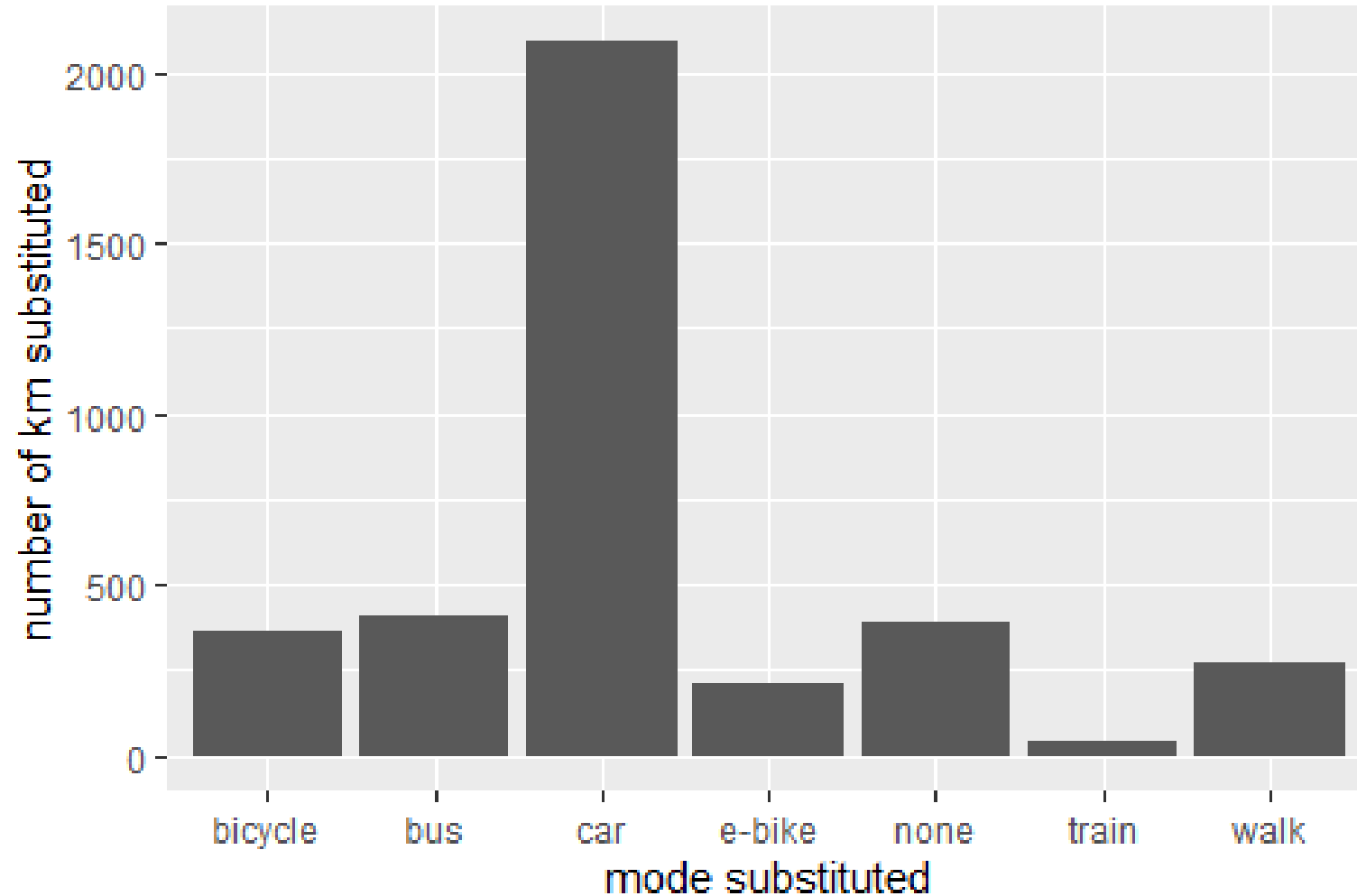
Can see:

- What types of road / infrastructure are used / avoided.
- Heat mapping of destinations, identifying where parking is wanted.



Typical Brighton
average power input
100W = 'moderate'
physical activity

Leeds & Brighton e-cargobike trip substitution by mode(total km)



The e-cargo bikes:

- Substituted over 2000km of driving
- Generated around 400km of new journeys
- Encouraged people to take the e-cargo bike instead of the bus

SOFT(ER) DATA



‘I’ve never been one to cycle much around Brighton’



‘Would you recommend an e-cargo bike to other people?’

I’ve probably recommended it to like about 500 people this month. Definitely. Yeah.’



‘All the kids wanted to get on it, and me kind of going, oh, God, like can we do it another time, it's so hot, can we do it another time, but...’



‘Yeah, it felt good, I went around someone and I was like, I can’t believe I just did that really confidently!’

INITIAL OBSERVATIONS



‘No need for super skills or silly clothes’





‘Not a problem’



‘Drivers are more patient’



‘You’re seeing more
of them around’

PROBLEMS AND SOLUTIONS



Riese and Muller Multitinker Vario 20

£5,839.00



Surge Boost – £583.90 of free accessories with this bike [?](#)

OR

£ Finance Available – Contact us for options. [?](#)

Gates Carbon Drive Belt
65kg Passenger Limit



Key Feature

**Top quality long tail cargo bike with
Bosch Smart System & low maintenance
drivetrain**



Battery

Bosch PowerTube 625 Horizontal



Motor

**Bosch Performance Line CX (smart
system)**



Gearing


**Enviolo hub gears & Gates Carbon B
drive**



Cars Vans **Bikes** Motorhomes Caravans Trucks Farm Plant

AutoTrader
Bikes

Used bikes New bikes Sell your bike Bike reviews **E-bikes** Electric bikes Finance Insurance



E-BIKES
The future of cycling

Make	Model
<input type="text" value="Any"/>	<input type="text" value="Any"/>
Postcode*	Distance
<input type="text" value="Enter a Postcode"/>	<input type="text" value="National"/>
Min price	Max price
<input type="text" value="Any"/>	<input type="text" value="Any"/>

Is an e-bike right for me?



In-house storage generally impractical – need large on-street hangars



In-town parking not secure – perhaps a dedicated space in multi-storey car parks?

What next for ELEVATE?

Follow our blog:

<https://blogs.brighton.ac.uk/elevate/>

Winter trials ending May 2024

Analysis continuing over the summer



LITTLE GRAZERS – e-cargo bike as a practical, fast delivery vehicle